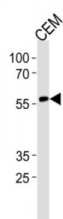
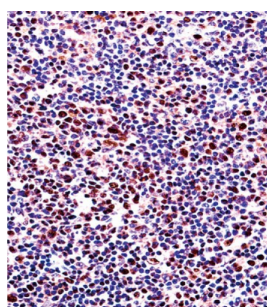
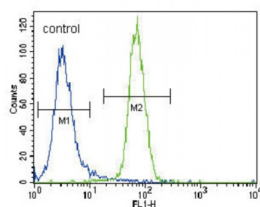


Abbexa Ltd, Innovation Centre, Cambridge Science Park, Cambridge, CB4 0EY, UK
Telephone: +44 (0) 1223 755950 - Fax: +44 (0) 1223 755951 - E-Mail: info@abbexa.com

Runt-Related Transcription Factor 2 (RUNX2) Antibody

Catalogue No.: abx033650



Runx2 is a member of the RUNX family of transcription factors. It is a nuclear protein with an Runt DNA-binding domain. This protein is essential for osteoblastic differentiation and skeletal morphogenesis and acts as a scaffold for nucleic acids and regulatory factors involved in skeletal gene expression. It can bind DNA both as a monomer or, with more affinity, as a subunit of a heterodimeric complex. Mutations in the Runx2 gene have been associated with the bone development disorder cleidocranial dysplasia (CCD).

Target: RUNX2

Reactivity: Human

Host: Rabbit

Clonality: Polyclonal

Tested Applications: WB, IHC, FCM

Abbexa Ltd, Innovation Centre, Cambridge Science Park, Cambridge, CB4 0EY, UK
Telephone: +44 (0) 1223 755950 - Fax: +44 (0) 1223 755951 - E-Mail: info@abbexa.com

Recommended dilutions: Optimal dilutions/concentrations should be determined by the end user.

Immunogen: Human RUNX2.

Purification: Peptide Affinity Purified Rabbit Polyclonal Antibody.

Isotype: IgG

Conjugation: Unconjugated

Specificity: This RUNX2 antibody is generated from rabbits immunized with a KLH conjugated synthetic peptide between 445-474 amino acids surrounding S533 of human RUNX2.

Storage: Aliquot and store at -20 °C. Avoid repeated freeze/thaw cycles.

Swiss Prot: [Q13950](#)

NCBI Accession: NP_001015051.3, NP_001019801.3

Buffer: PBS with 0.09% (W/V) sodium azide. This antibody is purified through a protein A column, followed by peptide affinity purification.

Note: This product is for research use only.