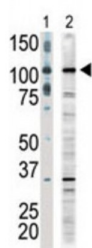
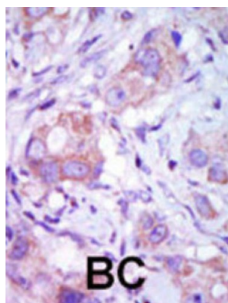


Abbexa Ltd, Innovation Centre, Cambridge Science Park, Cambridge, CB4 0EY, UK
Telephone: +44 (0) 1223 755950 - Fax: +44 (0) 1223 755951 - E-Mail: info@abbexa.com

MLK1 Antibody

Catalogue No.: abx033763



MLK1 is a MLK (MAP3K) type protein kinase. The catalytic domain of mixed-lineage kinases (MLKs) kinases have amino acid sequence similarity to both the tyr-specific and the ser/thr-specific kinase classes. In addition to the unusual nature of the kinase catalytic domains, MLK1 and MLK2 contain 2 leu/ile-zipper motifs and a basic sequence near their C-termini. MLK1 is a member of the neuronal apoptotic JNK/c-Jun pathway acting between Rac1/Cdc42 and MKK4 and 7 in death signaling. MLK1 expression has been documented in human epithelial tumor cell lines of colonic, breast and esophageal origin.

Target: MLK1

Reactivity: Human, Mouse, Rat

Host: Rabbit

Clonality: Polyclonal

Tested Applications: WB, IHC

Recommended dilutions: Optimal dilutions/concentrations should be determined by the end user.

Immunogen: Human MLK1.

Purification: Purified Rabbit Polyclonal Antibody.

Isotype: IgG

Abbexa Ltd, Innovation Centre, Cambridge Science Park, Cambridge, CB4 0EY, UK
Telephone: +44 (0) 1223 755950 - Fax: +44 (0) 1223 755951 - E-Mail: info@abbexa.com

Conjugation: Unconjugated

Specificity: This MLK1 antibody is generated from rabbits immunized with a KLH conjugated synthetic peptide between 1070-1104 amino acids from the C-terminal region of human MLK1.

Storage: Aliquot and store at -20 °C. Avoid repeated freeze/thaw cycles.

Swiss Prot: [P80192](#)

NCBI Accession: NP_149132.2

Buffer: PBS with 0.09% (W/V) sodium azide. This antibody is purified through a protein G column, eluted with high and low pH buffers and neutralized immediately, followed by dialysis against PBS.

Note: This product is for research use only.