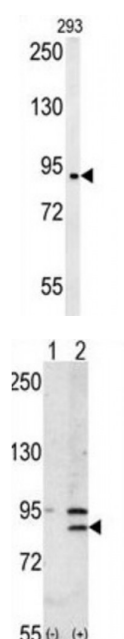
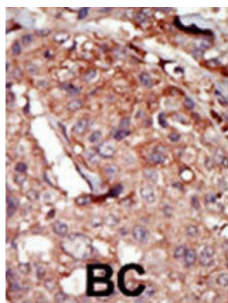


Abbexa Ltd, Innovation Centre, Cambridge Science Park, Cambridge, CB4 0EY, UK
Telephone: +44 (0) 1223 755950 - Fax: +44 (0) 1223 755951 - E-Mail: info@abbexa.com

Bromodomain-Containing Protein 2 (BRD2) Antibody

Catalogue No.: abx033841



BRD2 is a mitogen-activated kinase which localizes to the nucleus. The gene maps to the major histocompatibility complex (MHC) class II region on chromosome 6p21.3 but sequence comparison suggests that the protein is not involved in the immune response. Homology to the Drosophila gene female sterile homeotic suggests that this human protein may be part of a signal transduction pathway involved in growth control.

Target:	BRD2
Reactivity:	Human
Host:	Rabbit
Clonality:	Polyclonal
Tested Applications:	WB, IHC

Recommended dilutions: Optimal dilutions/concentrations should be determined by the end user.

Abbexa Ltd, Innovation Centre, Cambridge Science Park, Cambridge, CB4 0EY, UK
Telephone: +44 (0) 1223 755950 - Fax: +44 (0) 1223 755951 - E-Mail: info@abbexa.com

Immunogen:	Human BRD2.
Purification:	Purified Rabbit Polyclonal Antibody.
Isotype:	IgG
Conjugation:	Unconjugated
Specificity:	This BRD2 antibody is generated from rabbits immunized with a KLH conjugated synthetic peptide between 170-200 amino acids from the Central region of human BRD2.
Storage:	Aliquot and store at -20 °C. Avoid repeated freeze/thaw cycles.
Swiss Prot:	P25440
NCBI Accession:	NP_001106653.1, NP_001186384.1, NP_001186385.1, NP_005095.1
Buffer:	PBS with 0.09% (W/V) sodium azide. This antibody is purified through a protein G column, eluted with high and low pH buffers and neutralized immediately, followed by dialysis against PBS.
Note:	This product is for research use only.