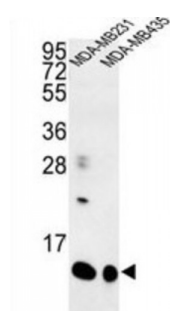
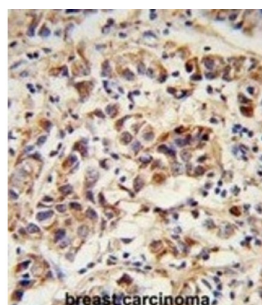


Abbexa Ltd, Innovation Centre, Cambridge Science Park, Cambridge, CB4 0EY, UK  
Telephone: +44 (0) 1223 755950 - Fax: +44 (0) 1223 755951 - E-Mail: [info@abbexa.com](mailto:info@abbexa.com)

## Small Proline Rich Protein 1B (SPRR1B) Antibody

Catalogue No.: abx034208



SPRR1B is a keratinocyte protein that first appears in the cell cytosol, but ultimately becomes cross-linked to membrane proteins by transglutaminase. All that results in the formation of an insoluble envelope beneath the plasma membrane. Can function as both amine donor and acceptor in transglutaminase-mediated cross-linkage.

**Target:** SPRR1B

**Reactivity:** Human

**Host:** Rabbit

**Clonality:** Polyclonal

**Tested Applications:** WB, IHC

**Recommended dilutions:** Optimal dilutions/concentrations should be determined by the end user.

**Immunogen:** Human SPRR1B.

**Purification:** Peptide Affinity Purified Rabbit Polyclonal Antibody.

**Isotype:** IgG

**Conjugation:** Unconjugated

Abbexa Ltd, Innovation Centre, Cambridge Science Park, Cambridge, CB4 0EY, UK  
Telephone: +44 (0) 1223 755950 - Fax: +44 (0) 1223 755951 - E-Mail: [info@abbexa.com](mailto:info@abbexa.com)

|                     |  |
|---------------------|--|
| <b>Specificity:</b> | This SPRR1B antibody is generated from rabbits immunized with a KLH conjugated synthetic peptide between 63-89 amino acids from the C-terminal region of human SPRR1B. |
| <b>Storage:</b>     | Aliquot and store at -20 °C. Avoid repeated freeze/thaw cycles.  |
| <b>Swiss Prot:</b>  | <a href="#"><u>P22528</u></a>  |
| <b>Gene Symbol:</b> | SPRR1B   |
| <b>Buffer:</b>      | PBS with 0.09% (W/V) sodium azide. This antibody is purified through a protein A column, followed by peptide affinity purification.                                    |
| <b>Note:</b>        | This product is for research use only.   |