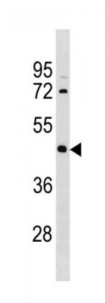


Abbexa Ltd, Innovation Centre, Cambridge Science Park, Cambridge, CB4 0EY, UK  
Telephone: +44 (0) 1223 755950 - Fax: +44 (0) 1223 755951 - E-Mail: [info@abbexa.com](mailto:info@abbexa.com)

## Iroquois Homeobox 1 (IRX1) Antibody

Catalogue No.: abx034718



IRX1 is a member of the Iroquois homeobox gene family. The genes from this family have multiple roles in vertebrate development. The gene encoding IRX1 is expressed in the brain, lung and gut during specific stages of mouse development.

**Target:** IRX1

**Reactivity:** Human

**Host:** Rabbit

**Clonality:** Polyclonal

**Tested Applications:** WB

**Recommended dilutions:** Optimal dilutions/concentrations should be determined by the end user.

**Purification:** Peptide Affinity Purified Rabbit Polyclonal Antibody.

**Isotype:** IgG

**Conjugation:** Unconjugated

**Specificity:** This IRX1 antibody is generated from rabbits immunized with a KLH conjugated synthetic peptide between 2-28 amino acids from the N-terminal region of human IRX1.

**Storage:** Aliquot and store at -20 °C. Avoid repeated freeze/thaw cycles.

**Swiss Prot:** [P78414](#)

**Buffer:** PBS with 0.09% (W/V) sodium azide. This antibody is purified through a protein A column, followed by peptide affinity purification.

**Note:** This product is for research use only.