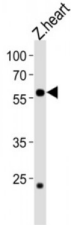


Abbexa Ltd, Innovation Centre, Cambridge Science Park, Cambridge, CB4 0EY, UK  
Telephone: +44 (0) 1223 755950 - Fax: +44 (0) 1223 755951 - E-Mail: info@abbexa.com

## DANRE ccdc149b Antibody

Catalogue No.: abx034820



DANRE ccdc149b Antibody is a Rabbit Polyclonal antibody against DANRE ccdc149b.

**Target:** DANRE ccdc149b

**Reactivity:** Zebrafish

**Host:** Rabbit

**Clonality:** Polyclonal

**Tested Applications:** WB

**Recommended dilutions:** Optimal dilutions/concentrations should be determined by the end user.

**Purification:** Peptide Affinity Purified Rabbit Polyclonal Antibody.

**Isotype:** IgG

**Conjugation:** Unconjugated

**Specificity:** This DANRE ccdc149b antibody is generated from rabbits immunized with a KLH conjugated synthetic peptide between 62-89 amino acids from the N-terminal region of DANRE ccdc149b.

**Storage:** Aliquot and store at -20 °C. Avoid repeated freeze/thaw cycles.

**Swiss Prot:** [Q6DH86](#)

**NCBI Accession:** NP\_001002710.1

**Buffer:** PBS with 0.09% (W/V) sodium azide. This antibody is purified through a protein A column, followed by peptide affinity purification.

**Note:** This product is for research use only.