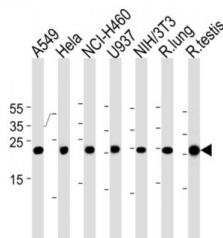


Abbexa Ltd, Innovation Centre, Cambridge Science Park, Cambridge, CB4 0EY, UK
Telephone: +44 (0) 1223 755950 - Fax: +44 (0) 1223 755951 - E-Mail: info@abbexa.com

C / EBP delta Antibody

Catalogue No.: abx034885



C/EBP is a DNA-binding protein that recognizes two different motifs: the CCAAT homology common to many promoters and the enhanced core homology common to many enhancers. Important transcriptional activator in the regulation of genes involved in immune and inflammatory responses, may play an important role in the regulation of the several genes associated with activation and/or differentiation of macrophages.

Target: C/EBP delta

Reactivity: Human, Mouse, Rat

Host: Rabbit

Clonality: Polyclonal

Tested Applications: WB

Recommended dilutions: Optimal dilutions/concentrations should be determined by the end user.

Immunogen: Rat Cebpd.

Purification: Peptide Affinity Purified Rabbit Polyclonal Antibody.

Isotype: IgG

Conjugation: Unconjugated

Specificity: This Rat Cebpd antibody is generated from rabbits immunized with a KLH conjugated synthetic peptide between 161-189 amino acids from the Central region of rat Cebpd.

Storage: Aliquot and store at -20 °C. Avoid repeated freeze/thaw cycles.

Swiss Prot: [Q03484](#)

NCBI Accession: NP_037286.1

Abbexa Ltd, Innovation Centre, Cambridge Science Park, Cambridge, CB4 0EY, UK
Telephone: +44 (0) 1223 755950 - Fax: +44 (0) 1223 755951 - E-Mail: info@abbexa.com

Buffer: PBS with 0.09% (W/V) sodium azide. This antibody is purified through a protein A column, followed by peptide affinity purification.

Note: This product is for research use only.