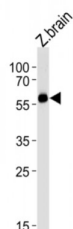


Abbexa Ltd, Innovation Centre, Cambridge Science Park, Cambridge, CB4 0EY, UK
Telephone: +44 (0) 1223 755950 - Fax: +44 (0) 1223 755951 - E-Mail: info@abbexa.com

DANRE foxh1 Antibody

Catalogue No.: abx034971



Transcriptional activator. Activates an activin response element (ARE). Recognizes and binds to the DNA sequence 5'-TGT[GT][GT]ATT-3'. Modulator of nodal signaling required for organizer formation. Also required for the development of dorsal axial structures and left-right symmetry.

Target: DANRE foxh1

Reactivity: Zebrafish

Host: Rabbit

Clonality: Polyclonal

Tested Applications: WB

Recommended dilutions: Optimal dilutions/concentrations should be determined by the end user.

Immunogen: Zebrafish DANRE foxh1.

Purification: Peptide Affinity Purified Rabbit Polyclonal Antibody.

Isotype: IgG

Conjugation: Unconjugated

Specificity: This DANRE foxh1 antibody is generated from rabbits immunized with a KLH conjugated synthetic peptide between 313-334 amino acids from the Central region of DANRE foxh1.

Storage: Aliquot and store at -20 °C. Avoid repeated freeze/thaw cycles.

Swiss Prot: [Q9I9E1](#)

NCBI Accession: NP_571577.1

Abbexa Ltd, Innovation Centre, Cambridge Science Park, Cambridge, CB4 0EY, UK
Telephone: +44 (0) 1223 755950 - Fax: +44 (0) 1223 755951 - E-Mail: info@abbexa.com

Buffer: PBS with 0.09% (W/V) sodium azide. This antibody is purified through a protein A column, followed by peptide affinity purification.

Note: This product is for research use only.