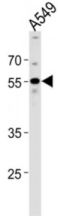


Abbexa Ltd, Innovation Centre, Cambridge Science Park, Cambridge, CB4 0EY, UK  
Telephone: +44 (0) 1223 755950 - Fax: +44 (0) 1223 755951 - E-Mail: info@abbexa.com

## Periphilin 1 (PPHLN1) Antibody

Catalogue No.: abx034978



Involved in epithelial differentiation and contributes to epidermal integrity and barrier formation.

**Target:** PPHLN1

**Reactivity:** Human

**Host:** Rabbit

**Clonality:** Polyclonal

**Tested Applications:** WB, IF/ICC

**Recommended dilutions:** Optimal dilutions/concentrations should be determined by the end user.

**Immunogen:** Human PPHLN1.

**Purification:** Peptide Affinity Purified Rabbit Polyclonal Antibody.

**Isotype:** IgG

**Conjugation:** Unconjugated

**Specificity:** This PPHLN1 antibody is generated from rabbits immunized with a KLH conjugated synthetic peptide between 45-66 amino acids from the N-terminal region of human PPHLN1.

**Storage:** Aliquot and store at -20 °C. Avoid repeated freeze/thaw cycles.

**Swiss Prot:** [Q8NEY8](#)

**Gene Symbol:** PPHLN1

**NCBI Accession:** NP\_001137259.1, NP\_001137260.1, NP\_057572.5, NP\_958846.1, NP\_958847.1, NP\_958848.1, NP\_958923.1

Abbexa Ltd, Innovation Centre, Cambridge Science Park, Cambridge, CB4 0EY, UK  
Telephone: +44 (0) 1223 755950 - Fax: +44 (0) 1223 755951 - E-Mail: [info@abbexa.com](mailto:info@abbexa.com)

**Buffer:** PBS with 0.09% (W/V) sodium azide. This antibody is purified through a protein A column, followed by peptide affinity purification.

**Note:** This product is for research use only.