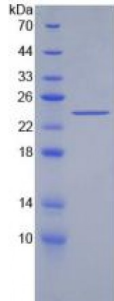


Abbexa Ltd, Innovation Centre, Cambridge Science Park, Cambridge, CB4 0EY, UK
Telephone: +44 (0) 1223 755950 - Fax: +44 (0) 1223 755951 - E-Mail: info@abbexa.com

Human Acetylcholinesterase (AChE) Protein

Catalogue No.: abx065083



SDS-PAGE analysis of Human Acetylcholinesterase Protein.

Recombinant Acetylcholinesterase (AChE) is a recombinant protein from Human. It is produced in E.coli using Prokaryotic expression.

Target: Acetylcholinesterase (AChE)

Origin: Human

Host: E. coli

Tested Applications: ELISA, WB, IP, SDS-PAGE

Purity: > 95%

Form: Lyophilized

Conjugation: Unconjugated

Storage: Store at 2-8 °C for up to one month. Store at -80 °C for up to one year. Avoid repeated freeze/thaw cycles.

Expression: Recombinant

Molecular Weight: 23.9 kDa

Swiss Prot: [P22303](#)

Sequence Fragment: Phe377-Thr574

Sequence: MGHHHHHHSGSEF-FSKDNESLIS RAEFLAGVRV GVPQVSDLAA EAVVLHYTDW LHPEDPARLR
EALSDVVGDH NVVCPVAQLA GRLAAQGARV YAYVFEHRAS TLSWPLWMGV PHGYEIEFIF
GIPLDPSRNY TAEKIFAQR LMRYWANFAR TGDNEPRDP KAPQWPPYTA GAQQYVSLDL
RPLEVRRGLR AQACAFWNRF LPKLLSAT

Abbexa Ltd, Innovation Centre, Cambridge Science Park, Cambridge, CB4 0EY, UK
Telephone: +44 (0) 1223 755950 - Fax: +44 (0) 1223 755951 - E-Mail: info@abbexa.com

Tag: N-terminal His-tag

Activity: Not tested

Concentration: Prior to lyophilization: 200 µg/ml

Buffer: Prior to lyophilization: PBS, pH 7.4, containing 0.01% Sarcosyl, 1 mM DTT, 5% Trehalose and Proclin-300.

Note: This product is for research use only.