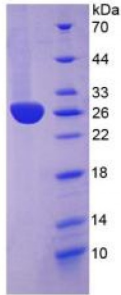


Abbexa Ltd, Innovation Centre, Cambridge Science Park, Cambridge, CB4 0EY, UK  
Telephone: +44 (0) 1223 755950 - Fax: +44 (0) 1223 755951 - E-Mail: info@abbexa.com

## Rabbit C Reactive Protein (CRP) Protein

Catalogue No.: abx065614



SDS-PAGE analysis of Rabbit C-Reactive Protein.

Recombinant C-Reactive Protein (CRP) is a recombinant protein from Rabbit. It is produced in E.coli using Prokaryotic expression.

**Target:** C Reactive Protein (CRP)

**Origin:** Rabbit

**Host:** E. coli

**Tested Applications:** WB, SDS-PAGE

**Purity:** > 98%

**Form:** Lyophilized

**Reconstitution:** Reconstitute in 100mM NaHCO<sub>3</sub>, 500mM NaCl (pH8.3) to a concentration of 0.1 - 1.0 mg/ml. Do not vortex.

**Conjugation:** Unconjugated

**Storage:** Store at 2-8 °C for up to one month. Store at -80 °C for up to one year. Avoid repeated freeze/thaw cycles.

**Expression:** Recombinant

**Molecular Weight:** 23.7 kDa (Predicted Molecular Mass); 26 kDa (Accurate Molecular Mass)

**Swiss Prot:** [P02742](#)

**Sequence Fragment:** Ala21-Pro225

Abbexa Ltd, Innovation Centre, Cambridge Science Park, Cambridge, CB4 0EY, UK  
Telephone: +44 (0) 1223 755950 - Fax: +44 (0) 1223 755951 - E-Mail: info@abbexa.com

**Sequence:** MGHHHHHSGSEF-AGMHKKAFVF PKESDNSYVS LNAQLKKPLK AFTVCLYFYT DLSMTRGYSI  
FSYATTRQFN EILLFWSKDI GYSFSVGGDE IIFKVDIPV DPTHLCASWE SSTGIAELWW  
DGKPMVRKSL KKG YILGPEA SIILGQDQDS FGGSFEKQQS LVGDIGNVNM WDYALSPEEI  
NTIYAGGTFS PNVLDWRELT YQVRGEVHVK PQLWP

**Tag:** One N-terminal His-tag

**Activity:** Not tested

**Concentration:** Prior to lyophilization: 200 µg/ml

**Buffer:** Prior to lyophilization: 100 mM NaHCO<sub>3</sub>, 500 mM NaCl, pH 8.3, containing 1 mM EDTA, 1 mM DTT, 0.01% Sarcosyl, 5% Trehalose and Proclin-300.

**Note:** This product is for research use only.