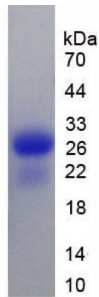


## Rat Calbindin (CALB) Protein

Catalogue No.: abx065652



SDS-PAGE analysis of Rat Calbindin Protein.

Recombinant Calbindin (CALB) is a recombinant protein from Rat. It is produced in E.coli using Prokaryotic expression.

**Target:** Calbindin (CALB)

**Origin:** Rat

**Host:** E. coli

**Tested Applications:** ELISA, WB, IP, SDS-PAGE

**Purity:** > 95%

**Form:** Lyophilized

**Conjugation:** Unconjugated

**Storage:** Store at 2-8 °C for up to one month. Store at -80 °C for up to one year. Avoid repeated freeze/thaw cycles.

**Expression:** Recombinant

**Molecular Weight:** 31.1 kDa

**Swiss Prot:** [P07171](#)

**Sequence Fragment:** Ala2-Asn261

**Sequence:** MGHHHHHHSGS-AESHLQSSL ITASQFFEIW LHFADGSGY LEGKELQNLI QELLQARKKA  
GLELSPMKT FVDQYQQRDD GKIGIVELAH VLPTEENFLL LFRCQQLKSC EEFMKTWRKY  
DTDHSGFIET EELKNFLKDL LEKANKTVDD TKLAEYTDLM LKLFDSNNDG KLELTEMARL  
LPVQENFLK FQGIKMCGKE FNKAFELYDQ DGNGYIDENE LDALLKDLCE KNKQELDINN  
ISTYKKNIMA LSDGGKLYRT DLALILSAGD N

Abbexa Ltd, Innovation Centre, Cambridge Science Park, Cambridge, CB4 0EY, UK  
Telephone: +44 (0) 1223 755950 - Fax: +44 (0) 1223 755951 - E-Mail: info@abbexa.com

**Tag:** N-terminal His-tag

**Activity:** Not tested

**Concentration:** Prior to lyophilization: 200 µg/ml

**Buffer:** Prior to lyophilization: PBS, pH 7.4, containing 0.01% Sarcosyl, 1 mM DTT, 5% Trehalose and Proclin-300.

**Note:** This product is for research use only.