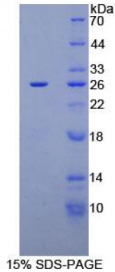


## Human Carbohydrate Antigen 125 (CA125) Protein

Catalogue No.: abx065678



SDS-PAGE analysis of Human CA125 Protein.

Recombinant CA125 is a recombinant protein from Human. It is produced in E.coli using Prokaryotic expression.

**Target:** Carbohydrate Antigen 125 (CA125)

**Origin:** Human

**Host:** E. coli

**Tested Applications:** ELISA, WB, IP, SDS-PAGE

**Purity:** > 95%

**Form:** Lyophilized

**Conjugation:** Unconjugated

**Storage:** Store at 2-8 °C for up to one month. Store at -80 °C for up to one year. Avoid repeated freeze/thaw cycles.

**Expression:** Recombinant

**Molecular Weight:** 21.2 kDa

**Swiss Prot:** [Q8WXI7](#)

**Sequence Fragment:** Arg21622-Ser21762

**Sequence:** MHHHHHHSSG LVPRGSGMKE TAAAKFERQH MDSPDLGTDD DDKAMADIGS EF- RVIALRSVK  
NGAETRVDLL CTYLQPLSGP GLPIKQVFHE LSQQTHGITR LGPYSLDKDS LYLNGYNEPG  
LDEPPTTPKP ATTFPLPLSE ATTAMGYHLK TLTLNFTISN LQYSPDMGKG SATFNSTEGV  
LQHLLRPLFQ KS

**Tag:** N-terminal His-tag

Abbexa Ltd, Innovation Centre, Cambridge Science Park, Cambridge, CB4 0EY, UK  
Telephone: +44 (0) 1223 755950 - Fax: +44 (0) 1223 755951 - E-Mail: info@abbexa.com

**Activity:** Not tested

**Concentration:** Prior to lyophilization: 200 µg/ml

**Buffer:** Prior to lyophilization: 20 mM Tris, 150 mM NaCl, pH 8.0, containing 1 mM EDTA, 1 mM DTT, 0.01% Sarcosyl, 5% Trehalose and Proclin-300.

**Note:** This product is for research use only.