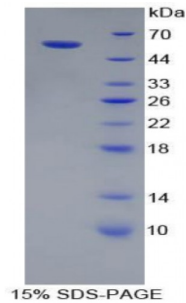


Abbexa Ltd, Innovation Centre, Cambridge Science Park, Cambridge, CB4 0EY, UK
Telephone: +44 (0) 1223 755950 - Fax: +44 (0) 1223 755951 - E-Mail: info@abbexa.com

Rat Cathepsin A (CTSA) Protein

Catalogue No.: abx065806



SDS-PAGE analysis of Rat Cathepsin A Protein.

Recombinant Cathepsin A (CTSA) is a recombinant protein from Rat. It is produced in E.coli using Prokaryotic expression.

Target: Cathepsin A (CTSA)

Origin: Rat

Host: E. coli

Tested Applications: ELISA, WB, IP, SDS-PAGE

Purity: > 95%

Form: Lyophilized

Conjugation: Unconjugated

Storage: Store at 2-8 °C for up to one month. Store at -80 °C for up to one year. Avoid repeated freeze/thaw cycles.

Expression: Recombinant

Molecular Weight: 54.9 kDa

Swiss Prot: [Q6AYS3](#)

Sequence Fragment: Ala151-Val394

Abbexa Ltd, Innovation Centre, Cambridge Science Park, Cambridge, CB4 0EY, UK
Telephone: +44 (0) 1223 755950 - Fax: +44 (0) 1223 755951 - E-Mail: info@abbexa.com

Sequence: MRNKKFELGL EFPNLPYYID GDVKLTQSMA IIRYIADKHN MLGGCPKERA EISMLEGAVL
DIRYGVSRIA YSKDFETLKV DFLSKLPEML KMFEDRLCHK TYLNGDHVTH PDFMLYDALD
VVLYMDPMCL DAFPKLVCFK KRIEAIQID KYLKSSKYIA WPLQGQWQATF GGDHPPKSD
GSTSGSGHHH HHSAGLVPR GSTAIGMKET AAACFERQHM DSPDLGTLEV LFQGPLGSEF-
ALKDFYHLFP EYKDNKFLT GESYAGIYIP TLAVLVMQDP SMNLQGLAVG NGLSSYEQND
NSLVYFAYYH GLLGNRLWTS LQTHCCSQNK CNFYDNKDPD CVNNLQEVSR IVGKSGLNII
NLYAPCAGGV PGRDRSEDTL VVQDFGNIFT RLPLKRRFPE ALLLRSGDKV RLDPPCTNTT
APSTYLNPNY VRKALHIPES LPRWDMCNLM VNLQYRRLYE SMNSQYLKLL SSQKYQILLY NGDV

Tag: Two N-terminal tags, His-tag and GST-tag

Activity: Not tested

Concentration: Prior to lyophilization: 200 µg/ml

Buffer: Prior to lyophilization: PBS, pH 7.4, containing 0.01% Sarcosyl, 1 mM DTT, 5% Trehalose and Proclin-300.

Note: This product is for research use only.