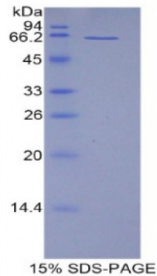


Abbexa Ltd, Innovation Centre, Cambridge Science Park, Cambridge, CB4 0EY, UK
Telephone: +44 (0) 1223 755950 - Fax: +44 (0) 1223 755951 - E-Mail: info@abbexa.com

Mouse CD5 Antigen Like Protein (CD5L) Protein

Catalogue No.: abx065842



SDS-PAGE analysis of Mouse CD5L Protein.

Recombinant CD5 Antigen Like Protein (CD5L) is a recombinant protein from Mouse. It is produced in E.coli using Prokaryotic expression.

Target: CD5 Antigen Like Protein (CD5L)

Origin: Mouse

Host: E. coli

Tested Applications: ELISA, WB, IP, SDS-PAGE

Purity: > 95%

Form: Lyophilized

Conjugation: Unconjugated

Storage: Store at 2-8 °C for up to one month. Store at -80 °C for up to one year. Avoid repeated freeze/thaw cycles.

Expression: Recombinant

Molecular Weight: 63.7 kDa

Swiss Prot: [Q9QWK4](#)

Sequence Fragment: Glu22-Val352

Abbexa Ltd, Innovation Centre, Cambridge Science Park, Cambridge, CB4 0EY, UK
Telephone: +44 (0) 1223 755950 - Fax: +44 (0) 1223 755951 - E-Mail: info@abbexa.com

Sequence: MRNKKFELGL EFPNLPYYID GDVKLTQSMA IIRYIADKHN MLGGCPKERA EISMLEGAVL
DIRYGVSRIA YSKDFETLKV DFLSKLPEML KMFEDRLCHK TYLNGDHVTH PDFMLYDALD
VVLYMDPMCL DAFPKLVCFK KRIEAIQID KYLKSSKYIA WPLQGQWQATF GGGDHPPKSD
GSTSGSGHHH HHSAGLVPR GSTAIGMKET AAACFERQHM DSPDLGTLEV LFQGPLGSEF-
ESPTKVQLV GGAHRCEGRV EVEHNGQWGT VCDDGWDRRD VAVVCRELNC GAVIQTPRGA
SYQPPASEQR VLIQGVDCNG TEDTLAQCEL NYDVFDCSHE EDAGAQCENP DSDLLFIPED
VRLVDGPGHC QGRVEVLHQS QWSTVCKAGW NLQVSKVCR QLGCGRALLT YGSCNKNTQG
KGPIWMGKMS CSGQEANLRS CLLSRLENNC THGEDTWMEC EDPFELKLVG GDTPCSGRLE
VLHKGSWGSV CDDNWGEKED QVVKQLGCG KSLHPSKTR KIYGPGAGRI WLDDVNCSSGK
EQSLEFCRHR LWGYHDCTHK EDVEVICTDF DV

Tag: Two N-terminal tags, His-tag and GST-tag

Activity: Not tested

Concentration: Prior to lyophilization: 200 µg/ml

Buffer: Prior to lyophilization: PBS, pH 7.4, containing 0.01% Sarcosyl, 1 mM DTT, 5% Trehalose and Proclin-300.

Note: This product is for research use only.