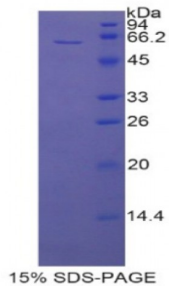


Abbexa Ltd, Innovation Centre, Cambridge Science Park, Cambridge, CB4 0EY, UK  
Telephone: +44 (0) 1223 755950 - Fax: +44 (0) 1223 755951 - E-Mail: info@abbexa.com

## Rat CD5 Antigen Like Protein (CD5L) Protein

Catalogue No.: abx065844



SDS-PAGE analysis of Rat CD5L Protein.

CD5 Antigen Like Protein (CD5L) is a protein from Rat. It is produced in E.coli using Prokaryotic expression.

**Target:** CD5 Antigen Like Protein (CD5L)

**Origin:** Rat

**Host:** E. coli

**Tested Applications:** ELISA, WB, IP, SDS-PAGE

**Purity:** > 95%

**Form:** Lyophilized

**Conjugation:** Unconjugated

**Storage:** Store at 2-8 °C for up to one month. Store at -80 °C for up to one year. Avoid repeated freeze/thaw cycles.

**Expression:** Recombinant

**Molecular Weight:** 63.8 kDa

**Swiss Prot:** [Q4KM75](#)

**Sequence Fragment:** Leu11-Leu346

Abbexa Ltd, Innovation Centre, Cambridge Science Park, Cambridge, CB4 0EY, UK  
Telephone: +44 (0) 1223 755950 - Fax: +44 (0) 1223 755951 - E-Mail: info@abbexa.com

**Sequence:** MRNKKFELGL EFPNLPYYID GDVKLTQSMA IIRYIADKHN MLGGCPKERA EISMLEGAVL  
DIRYGVSRIA YSKDFETLKV DFLSKLPEML KMFEDRLCHK TYLNGDHVTH PDFMLYDALD  
VVLYMDPMCL DAFPKLVCFK KRIEAIQID KYLKSSKYIA WPLQGQWQATF GGGDHPPKSD  
GSTSGSGHHH HHSAGLVPR GSTAIGMKET AA AKFERQHM DSPDLGTLEV LFQGPLGSEF-  
LLTIFVGLCF SESPTRVRLV GGAHRCEGRV EVKHNGQWGT VCDDGWDLID VSVVCRELNC  
GAAKKTPSGA SYHPPASEGQ SVLIQGV ECS GAEDMLAQCT LNYDVFDCSH AEDAGVQCEN  
PDNPENVRLV EGLGRCQGR L EVFYQQQWST VCKAGWNLQA SKVVCRLGC GRALLAHRCC  
NKNTQGKGPI WMSKMCSGR EANLQDCPFS PLESNCTHGE DTWMECEDPF ELRLVGGDTT  
CSGRLEVLHK GSWG SVCDDS WGEKEDQVVC KQLGCGKSLF PSPKARQSFG PGTGRIWLDD  
VCSGKEESL ELCRHRLWGY HDCTHKEDVG VICSEL

**Tag:** Two N-terminal tags, His-tag and GST-tag

**Activity:** Not tested

**Concentration:** Prior to lyophilization: 200 µg/ml

**Buffer:** Prior to lyophilization: PBS, pH 7.4, containing 0.01% Sarcosyl, 1 mM DTT, 5% Trehalose and Proclin-300.

**Note:** This product is for research use only.