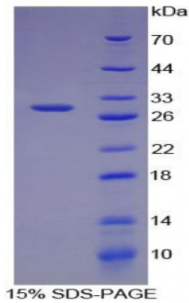


Abbexa Ltd, Innovation Centre, Cambridge Science Park, Cambridge, CB4 0EY, UK
Telephone: +44 (0) 1223 755950 - Fax: +44 (0) 1223 755951 - E-Mail: info@abbexa.com

Human Chordin (CHRD) Protein

Catalogue No.: abx065887



SDS-PAGE analysis of Human Chordin Protein.

Recombinant Chordin (CHRD) is a recombinant protein from Human. It is produced in E.coli using Prokaryotic expression.

Target: Chordin (CHRD)

Origin: Human

Host: E. coli

Tested Applications: ELISA, WB, IP, SDS-PAGE

Purity: > 95%

Form: Lyophilized

Conjugation: Unconjugated

Storage: Store at 2-8 °C for up to one month. Store at -80 °C for up to one year. Avoid repeated freeze/thaw cycles.

Expression: Recombinant

Molecular Weight: 27.7 kDa

Swiss Prot: [Q9H2X0](#)

Sequence Fragment: Arg700-Leu918

Sequence: MGSSHHHHHH SSGLVPRGSH MASMTGGQQM GRGSEF- R DPNTCFFEGQ QRPHGARWAP
NYDPLCSLCT CQRRTVICDP VVCPSPSCPH PVQAPDQCCP VCPEKQDVRD LPGLPRSRDP
GEGCYFDGDR SWRAAGTRWH PVVPPFGLIK CAVCTCKGGT GEVHCEKVQC PRLACAQPVR
VNPTDCKQC PVGSGAHPQL GDPMQADGPR GCRFAGQWFP ESQSWHPSVP PFGEMSCITC
RCGAGVPHCE RDDCSLPL

Abbexa Ltd, Innovation Centre, Cambridge Science Park, Cambridge, CB4 0EY, UK
Telephone: +44 (0) 1223 755950 - Fax: +44 (0) 1223 755951 - E-Mail: info@abbexa.com

Tag: Two N-terminal tags, His-tag and T7-tag

Activity: Not tested

Concentration: Prior to lyophilization: 200 µg/ml

Buffer: Prior to lyophilization: PBS, pH 7.4, containing 0.01% Sarcosyl, 1 mM DTT, 5% Trehalose and Proclin-300.

Note: This product is for research use only.