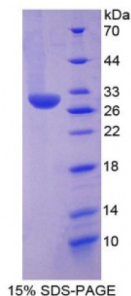


Mouse Chymase 1, Mast Cell (CMA1) Protein

Catalogue No.: abx065900



SDS-PAGE analysis of Mouse Chymase 1, Mast Cell Protein.

Recombinant Chymase 1, Mast Cell (CMA1) is a recombinant protein from Mouse. It is produced in E.coli using Prokaryotic expression.

Target: Chymase 1, Mast Cell (CMA1)

Origin: Mouse

Host: E. coli

Tested Applications: ELISA, WB, IP, SDS-PAGE

Purity: > 95%

Form: Lyophilized

Conjugation: Unconjugated

Storage: Store at 2-8 °C for up to one month. Store at -80 °C for up to one year. Avoid repeated freeze/thaw cycles.

Expression: Recombinant

Molecular Weight: 53.7 kDa

Swiss Prot: [P21844](#)

Sequence Fragment: Leu9-Asn247

Abbexa Ltd, Innovation Centre, Cambridge Science Park, Cambridge, CB4 0EY, UK
Telephone: +44 (0) 1223 755950 - Fax: +44 (0) 1223 755951 - E-Mail: info@abbexa.com

Sequence: MRNKKFELGL EFPNLPYYID GDVKLTQSMA IIRYIADKHN MLGGCPKERA EISMLEGAVL
DIRYGVSRIA YSKDFETLKV DFLSKLPEML KMFEDRLCHK TYLNGDHVTH PDFMLYDALD
VVLYMDPMCL DAFPCLVCFK KRIEAIQID KYLKSSKYIA WPLQGWQATF GGGDHPPKSD
GSTSGSGHHH HHSAGLVPR GSTAIGMKET AAKFERQHM DSPDLGTLEV LFQGPLGSEF-LL
LLGSSTKAG EIIGGTECIP HSRPYMAYLE IVTSENYLSA CSGFLIRRNFLVLTAAHCAGR
SITVLLGAHN KTSKEDTWQK LEVEKQFLHP KYDENLVVHD IMLLKLKEKA KLTGVTLP
LSANFNFIIP GRMCRAVGWG RTNVNEPASD TLQEVKMRLQ EPQACKHFTS FRHNSQLCVG
NPKKMQNVYK GDSGGPLLCA GIAQGIASYV HRNAKPPAVF TRISHYRPWI NKILREN

Tag: Two N-terminal tags, His-tag and GST-tag

Activity: Not tested

Concentration: Prior to lyophilization: 200 µg/ml

Buffer: Prior to lyophilization: PBS, pH 7.4, containing 0.01% Sarcosyl, 1 mM DTT, 5% Trehalose and Proclin-300.

Note: This product is for research use only.