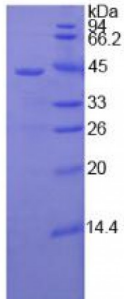


Abbexa Ltd, Innovation Centre, Cambridge Science Park, Cambridge, CB4 0EY, UK  
Telephone: +44 (0) 1223 755950 - Fax: +44 (0) 1223 755951 - E-Mail: info@abbexa.com

## Human Complement Component 3 (C3) Protein

Catalogue No.: abx066051



SDS-PAGE analysis of Human Complement Component 3 Protein.

Recombinant Complement Component 3 (C3) is a recombinant protein from Human. It is produced in E.coli using Prokaryotic expression.

**Target:** Complement Component 3 (C3)

**Origin:** Human

**Host:** E. coli

**Tested Applications:** ELISA, WB, IP, SDS-PAGE

**Purity:** > 95%

**Form:** Lyophilized

**Conjugation:** Unconjugated

**Storage:** Store at 2-8 °C for up to one month. Store at -80 °C for up to one year. Avoid repeated freeze/thaw cycles.

**Expression:** Recombinant

**Molecular Weight:** 42.4 kDa

**Swiss Prot:** [P01024](#)

**Sequence Fragment:** Leu1000-Glu1326

Abbexa Ltd, Innovation Centre, Cambridge Science Park, Cambridge, CB4 0EY, UK  
Telephone: +44 (0) 1223 755950 - Fax: +44 (0) 1223 755951 - E-Mail: info@abbexa.com

**Sequence:** MHHHHHSSG LVPRGSGMKE TAAAKFERQH MDSPDLGTDD DDKAMADIGS EF- L KHLIVTPSGC  
GEQNMIGMTP TVIAVHYLDE TEQWEKFGLE KRQGALELIK KGYTQQLAFR QPSSAFAAFV  
KRAPSTWLTA YVVKVFLAV NLIAIDSQVL CGAVKWLILE KQKPDGVFQE DAPVIHQEMI  
GGLRNNNEKD MALTAFLVIS LQEAKDICEE QVNSLPGSIT KAGDFLEANY MNLQRSYTVA  
IAGYALAQMG RLKGPLLNF LTTAKDKNRW EDPGKQLYNV EATSYALLAL LQLKDFDFVP  
PVVRWLNEQR YYGGGYGSTQ ATFMVFQALA QYQKDAPDHQ ELNLDVSLQL PSRSSKITHR  
IHWESASLLR SEETKE

**Tag:** Two N-terminal tags, His-tag and S-tag

**Activity:** Not tested

**Concentration:** Prior to lyophilization: 200 µg/ml

**Buffer:** Prior to lyophilization: PBS, pH 7.4, containing 0.01% Sarcosyl, 1 mM DTT, 5% Trehalose and Proclin-300.

**Note:** This product is for research use only.