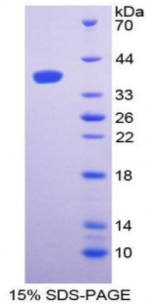


Abbexa Ltd, Innovation Centre, Cambridge Science Park, Cambridge, CB4 0EY, UK  
Telephone: +44 (0) 1223 755950 - Fax: +44 (0) 1223 755951 - E-Mail: info@abbexa.com

## Rat Complement Component 3 (C3) Protein

Catalogue No.: abx066052



SDS-PAGE analysis of Rat Complement Component 3 Protein.

Recombinant Complement Component 3 (C3) is a recombinant protein from Rat. It is produced in E.coli using Prokaryotic expression.

**Target:** Complement Component 3 (C3)

**Origin:** Rat

**Host:** E. coli

**Tested Applications:** ELISA, WB, IP, SDS-PAGE

**Purity:** > 95%

**Form:** Lyophilized

**Conjugation:** Unconjugated

**Storage:** Store at 2-8 °C for up to one month. Store at -80 °C for up to one year. Avoid repeated freeze/thaw cycles.

**Expression:** Recombinant

**Molecular Weight:** 40.3 kDa

**Swiss Prot:** [P01026](#)

**Sequence Fragment:** Asp966-Trp1313

Abbexa Ltd, Innovation Centre, Cambridge Science Park, Cambridge, CB4 0EY, UK  
Telephone: +44 (0) 1223 755950 - Fax: +44 (0) 1223 755951 - E-Mail: info@abbexa.com

**Sequence:** MGHHHHHSGS-DLSDQ VPDTDSETRI LLQGTPVAQM AEDAVIDGERL KHLIVTPSGC  
GEQNMIGMTP TVIAVHYLDQ TEQWEKFGLE KRQEALELIK KGYTQQLAFK QPISAYA AFN  
NRPPSTWLTA MWSRSFSLAA NLIAIDSQVL CGAVKWLILE KQKPDGVFQE DGPVIHQEMI  
GGFRNTKEAD VSLTAFVLIA LQEARDICEG QVNSLPGSIN KAGEYLEASY LNLQRPYTVA  
IAGYALALMN KLEEPLYLTKF LNTAKDRNRW EEPGQQLYNV EATSYALLAL LLLKDFDSVP  
PVVRWLNDER YYGGGYGSTQ ATFMVFQALA QYRADVPDHL DLNMDVSLHL PSRSSPTVFR LLW

**Tag:** N-terminal His-tag

**Activity:** Not tested

**Concentration:** Prior to lyophilization: 200 µg/ml

**Buffer:** Prior to lyophilization: PBS, pH 7.4, containing 0.01% Sarcosyl, 1 mM DTT, 5% Trehalose and Proclin-300.

**Note:** This product is for research use only.