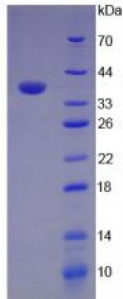


Abbexa Ltd, Innovation Centre, Cambridge Science Park, Cambridge, CB4 0EY, UK  
Telephone: +44 (0) 1223 755950 - Fax: +44 (0) 1223 755951 - E-Mail: info@abbexa.com

## Mouse Complement Component 3a (C3a) Protein

Catalogue No.: abx066054



SDS-PAGE analysis of Mouse C3a Protein.

Recombinant Complement Component 3a (C3a) is a recombinant protein from Mouse. It is produced in E.coli using Prokaryotic expression.

**Target:** Complement Component 3a (C3a)

**Origin:** Mouse

**Host:** E. coli

**Tested Applications:** ELISA, WB, IP, SDS-PAGE

**Purity:** > 95%

**Form:** Lyophilized

**Conjugation:** Unconjugated

**Storage:** Store at 2-8 °C for up to one month. Store at -80 °C for up to one year. Avoid repeated freeze/thaw cycles.

**Expression:** Recombinant

**Molecular Weight:** 41.6 kDa

**Swiss Prot:** [P01027](#)

**Sequence Fragment:** Glu1314-Asn1663

Abbexa Ltd, Innovation Centre, Cambridge Science Park, Cambridge, CB4 0EY, UK  
Telephone: +44 (0) 1223 755950 - Fax: +44 (0) 1223 755951 - E-Mail: info@abbexa.com

- Sequence:** MGHHHHHHSGSEF -ENGNLLR SEETKQNEAF SLTAKGKGRG TLSVVAVYHA KLKSKVTCKK  
FDLRVSIRPA PETAKKPEEA KNTMFLEICT KYLGDVDATM SILDISMMTG FAPDTKDLEL  
LASGVDRYIS KYEMNKAFSN KNTLIILEK ISHTEEDCLT FKVHQYFNVG LIQPGSVKVY  
SYYNLEESCT RFYHPEKDDG MLSKLCHSEM CRCAEENCFM QQSQEKINLN VRLDKACEPG  
VDYVYKTELT NIELLDDFDE YTMTIQQVIK SGSDEVQAGQ QRKFISHIKC RNALKLQKGG  
KYLmwGLSSD LWGEKPNTSY IIGKDTWVEH WPEAEECQDQ KYQKQCEELG AFTESMVVYG CPN
- Tag:** Two N-terminal tags, His-tag and GST-tag
- Activity:** Not tested
- Concentration:** Prior to lyophilization: 200 µg/ml
- Buffer:** Prior to lyophilization: 20 mM Tris, 150 mM NaCl, pH 8.0, containing 1 mM EDTA, 1 mM DTT, 0.01% Sarcosyl, 5% Trehalose and Proclin-300.
- Note:** This product is for research use only.