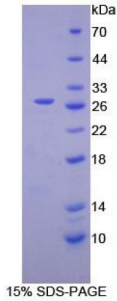


Mouse Complement Receptor 2 (CR2) Protein

Catalogue No.: abx066085



SDS-PAGE analysis of Mouse Complement Receptor 2 Protein.

Recombinant Complement Receptor 2 (CR2) is a recombinant protein from Mouse. It is produced in E.coli using Prokaryotic expression.

Target: Complement Receptor 2 (CR2)

Origin: Mouse

Host: E. coli

Tested Applications: ELISA, WB, IP, SDS-PAGE

Purity: > 95%

Form: Lyophilized

Conjugation: Unconjugated

Storage: Store at 2-8 °C for up to one month. Store at -80 °C for up to one year. Avoid repeated freeze/thaw cycles.

Expression: Recombinant

Molecular Weight: 26.4 kDa

Swiss Prot: [P19070](#)

Sequence Fragment: Cys463-Asp665

Sequence: MGSSHHHHHH SSGLVPRGSH MASMTGGQQM GRGSEF- CKPVGPHL FKRPQNQFIR
TAVNSSCDEG FQLSESAYQL CQGTIPWFIE IRLCKEITCP PPPVIHNGTH TWSSSEDVPY
GTVVTYMCYP GPEEGVKFKL IGEQTIHCTS DSRGRGSWSS PAPLCKLSLP AVQCTDVHVE
NGVKLTDNKA PYFYNDSVMF KCDDGYILSG SSQIRCKANN TWDPEKPLCK KEGCEPMRVH GLPDD

Abbexa Ltd, Innovation Centre, Cambridge Science Park, Cambridge, CB4 0EY, UK
Telephone: +44 (0) 1223 755950 - Fax: +44 (0) 1223 755951 - E-Mail: info@abbexa.com

Tag: Two N-terminal tags, His-tag and T7-tag

Activity: Not tested

Concentration: Prior to lyophilization: 200 µg/ml

Buffer: Prior to lyophilization: PBS, pH 7.4, containing 0.01% Sarcosyl, 1 mM DTT, 5% Trehalose and Proclin-300.

Note: This product is for research use only.