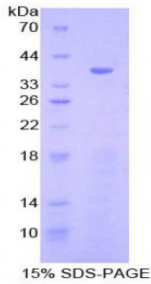


Abbexa Ltd, Innovation Centre, Cambridge Science Park, Cambridge, CB4 0EY, UK
Telephone: +44 (0) 1223 755950 - Fax: +44 (0) 1223 755951 - E-Mail: info@abbexa.com

Human Cytovillin (CVL) Protein

Catalogue No.: abx066271



SDS-PAGE analysis of Human Cytovillin Protein.

Recombinant Cytovillin is a recombinant protein from Human. It is produced in E.coli using Prokaryotic expression.

Target: Cytovillin (CVL)

Origin: Human

Host: E. coli

Tested Applications: ELISA, WB, IP, SDS-PAGE

Purity: > 95%

Form: Lyophilized

Conjugation: Unconjugated

Storage: Store at 2-8 °C for up to one month. Store at -80 °C for up to one year. Avoid repeated freeze/thaw cycles.

Expression: Recombinant

Molecular Weight: 38.6 kDa

Swiss Prot: [P15311](#)

Sequence Fragment: Met1-Arg295

Sequence: MGSSHHHHHH SSGLVPRGSH MASMTGGQQM GRGSEF- MPKPINVRVT TMDAELEFAI
QPNTTGKQLF DQVVKTIQLR EVWYFGLHYV DNKGFPTWLK LDKKVSAQEV RKENPLQFKF
RAKFYPEDVA EELIQDITQK LFFLQVKEGI LSDEIYCPPE TAVLLGSYAV QAKFGDYNKE
VHKSGYLSSE RLIPQRVMDQ HKLTRDQWED RIQVWHAHR GMLKDNAMLE YLKIAQDLEM
YGINYFEIKN KKGTDLWLGV DALGLNIYEK DDKLTPKIGF PWSEIRNISF NDKKFVIKPI
DKKAPDFVFY APRLRINKRI LQLCMGNHEL YMRRR

Abbexa Ltd, Innovation Centre, Cambridge Science Park, Cambridge, CB4 0EY, UK
Telephone: +44 (0) 1223 755950 - Fax: +44 (0) 1223 755951 - E-Mail: info@abbexa.com

Tag: Two N-terminal tags, His-tag and T7-tag

Activity: Not tested

Concentration: Prior to lyophilization: 200 µg/ml

Buffer: Prior to lyophilization: PBS, pH 7.4, containing 0.01% Sarcosyl, 1 mM DTT, 5% Trehalose and Proclin-300.

Note: This product is for research use only.