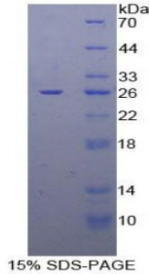


Human Dihydrolipoyl Dehydrogenase (DLD) Protein

Catalogue No.: abx066334



SDS-PAGE analysis of Human DLD Protein.

Recombinant Dihydrolipoyl Dehydrogenase (DLD) is a recombinant protein from Human. It is produced in E.coli using Prokaryotic expression.

Target: Dihydrolipoyl Dehydrogenase (DLD)

Origin: Human

Host: E. coli

Tested Applications: ELISA, WB, IP, SDS-PAGE

Purity: > 95%

Form: Lyophilized

Conjugation: Unconjugated

Storage: Store at 2-8 °C for up to one month. Store at -80 °C for up to one year. Avoid repeated freeze/thaw cycles.

Expression: Recombinant

Molecular Weight: 25.9 kDa

Swiss Prot: [P09622](#)

Sequence Fragment: Gly280-His487

Sequence: MGSSHHHHHH SSGLVPRGSH MASMTGGQQM GRGSEF- G ATKKSDGKID VSIEAASGGK
AEVITCDVLL VCIGRRPFTK NLGLEELGIE LDPRGRIPVN TRFQTKIPNI YAIGDVVAGP
MLAHKAEDG IICVEGMAGG AVHIDYNCVP SVIYTHPEVA WVGKSEEQLK EEGIEYKVGK
FPFAANSRAK TNADTDGMVK ILGQKSTDRV LGAHILGPGA GEMVNEAALA LEYGASCEDI
ARVCHAH

Abbexa Ltd, Innovation Centre, Cambridge Science Park, Cambridge, CB4 0EY, UK
Telephone: +44 (0) 1223 755950 - Fax: +44 (0) 1223 755951 - E-Mail: info@abbexa.com

Tag: Two N-terminal tags, His-tag and T7-tag

Activity: Not tested

Concentration: Prior to lyophilization: 200 µg/ml

Buffer: Prior to lyophilization: PBS, pH 7.4, containing 0.01% Sarcosyl, 1 mM DTT, 5% Trehalose and Proclin-300.

Note: This product is for research use only.