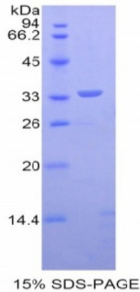


Abbexa Ltd, Innovation Centre, Cambridge Science Park, Cambridge, CB4 0EY, UK  
Telephone: +44 (0) 1223 755950 - Fax: +44 (0) 1223 755951 - E-Mail: info@abbexa.com

## Human Dystrophin (DMD) Protein

Catalogue No.: abx066369



SDS-PAGE analysis of Human Dystrophin Protein.

Recombinant Dystrophin (DMD) is a recombinant protein from Human. It is produced in E.coli using Prokaryotic expression.

**Target:** Dystrophin (DMD)

**Origin:** Human

**Host:** E. coli

**Tested Applications:** ELISA, WB, IP, SDS-PAGE

**Purity:** > 95%

**Form:** Lyophilized

**Conjugation:** Unconjugated

**Storage:** Store at 2-8 °C for up to one month. Store at -80 °C for up to one year. Avoid repeated freeze/thaw cycles.

**Expression:** Recombinant

**Molecular Weight:** 33.7 kDa

**Swiss Prot:** [P11532](#)

**Sequence Fragment:** Ala3048-Ser3328

**Sequence:** MGHHHHHSGSEF- ASQ HFLSTSVQGP WERAISPKNV PYYINHETQT TCWDHPKMTE  
LYQSLADLNN VRFSAYRTAM KLRLQKALC LDLLSLSAAC DALDQHNLKQ NDQPMILQI  
INCLTTIYDR LEQEHNNLVN VPLCVDMLN WLLNVYDTGR TGRIRVLSFK TGIISLCKAH  
LEDKYRYLFK QVASSTGFCD QRRLGLLLHD SIQIPRQLGE VASFGGSNIE PSVRSCFQFA  
NNKPEIEAAL FLDWMLRLEPQ SMVWLPVLHR VAAAETAKHQ AKCNICKECP IIGFRYRS

Abbexa Ltd, Innovation Centre, Cambridge Science Park, Cambridge, CB4 0EY, UK  
Telephone: +44 (0) 1223 755950 - Fax: +44 (0) 1223 755951 - E-Mail: info@abbexa.com

**Tag:** N-terminal His-tag

**Activity:** Not tested

**Concentration:** Prior to lyophilization: 200 µg/ml

**Buffer:** Prior to lyophilization: PBS, pH 7.4, containing 0.01% Sarcosyl, 1 mM DTT, 5% Trehalose and Proclin-300.

**Note:** This product is for research use only.