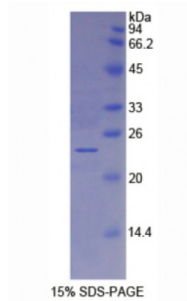


## Human Endothelial Cell Specific Molecule 1 (ESM1) Protein

Catalogue No.: abx066408



SDS-PAGE analysis of Human ESM1 Protein.

Recombinant Endothelial Cell Specific Molecule 1 (ESM1) is a recombinant protein from Human. It is produced in E.coli using Prokaryotic expression.

**Target:** Endothelial Cell Specific Molecule 1 (ESM1)

**Origin:** Human

**Host:** E. coli

**Tested Applications:** ELISA, WB, IP, SDS-PAGE

**Purity:** > 95%

**Form:** Lyophilized

**Conjugation:** Unconjugated

**Storage:** Store at 2-8 °C for up to one month. Store at -80 °C for up to one year. Avoid repeated freeze/thaw cycles.

**Expression:** Recombinant

**Molecular Weight:** 19.6 kDa

**Swiss Prot:** [Q9NQ30](#)

**Sequence Fragment:** Trp20-Arg184

**Sequence:** MGHHHHHHSGSEF-WSNNYAVDCP QHCDSSSECKS SPRCKRTVLD DCGCCRVCAA GRGETCYRTV  
SGMDGMKCGP GLRCQPSNGE DPFGEFEGIC KDCPYGTFGM DCRETNCNCQS GICDRGTGKC  
LKFPFFQYSV TKSSNRFVSL TEHDMASGDG NIVREEVVKE NAAGSPVMRK WLNPR

**Tag:** N-terminal His-tag

Abbexa Ltd, Innovation Centre, Cambridge Science Park, Cambridge, CB4 0EY, UK  
Telephone: +44 (0) 1223 755950 - Fax: +44 (0) 1223 755951 - E-Mail: info@abbexa.com

**Activity:** Not tested

**Concentration:** Prior to lyophilization: 200 µg/ml

**Buffer:** Prior to lyophilization: PBS, pH 7.4, containing 0.01% Sarcosyl, 1 mM DTT, 5% Trehalose and Proclin-300.

**Note:** This product is for research use only.