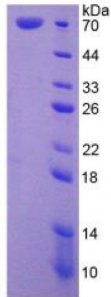


**Human Heat Shock 70kDa Protein 1 Like Protein (HSPA1L) Protein**

Catalogue No.: abx066997



SDS-PAGE analysis of Human HSPA1L Protein.

Recombinant Heat Shock 70kDa Protein 1 Like Protein (HSPA1L) is a recombinant protein from Human. It is produced in E.coli using Prokaryotic expression.

**Target:** Heat Shock 70kDa Protein 1 Like Protein (HSPA1L)**Origin:** Human**Host:** E. coli**Tested Applications:** ELISA, WB, IP, SDS-PAGE**Purity:** > 95%**Form:** Lyophilized**Conjugation:** Unconjugated**Storage:** Store at 2-8 °C for up to one month. Store at -80 °C for up to one year. Avoid repeated freeze/thaw cycles.**Expression:** Recombinant**Molecular Weight:** 71.9 kDa**Swiss Prot:** [P34931](#)**Sequence Fragment:** Met1-Asp641

Abbexa Ltd, Innovation Centre, Cambridge Science Park, Cambridge, CB4 0EY, UK  
Telephone: +44 (0) 1223 755950 - Fax: +44 (0) 1223 755951 - E-Mail: info@abbexa.com

**Sequence:** MGHHHHHHSGSEF-MATAKGIAIG IDLGTTYSCV GVFQHGKVEI IANDQGNRTT PSYVAFTDTE  
RLIGDAAKNQ VAMNPQNTVF DAKRLIGRKF NDPVVQADMK LWPFQVINEG GPKPKVLVSYK  
GENKAFYPEE ISSMVLTKLK ETAEAF LGHP VTNVITVPA YFNDSQRQAT KDAGVIAGLN  
VLRINEPTA AAAYGLDKG GQGERHVLIF DLGGGTFDVS ILTIDDGIFE VKATAGDTHL  
GGEDFDNRLV SHFVEEFKRK HKKDISQNK RAVRRLRTACE RAKRTLSSST QANLEIDSLY  
EGIDFYTSIT RARFEELCAD LFRGTLEPVE KALRDAKMDK AKIHDIVLVG GSTRIKPVQR  
LLQDYFNDRD LNKSINPDEA VAYGAAVQAA ILMGDKSEKV QDLLLLDVAP LSLGLETAGG  
VMTALIKRNS TIPTKQTQIF TTYSNQPVG LIQVYEGERA MTKDNNLLGR FDLTGIPPAP  
RGVPQIEVTF DIDANGILNV TATDKSTGKV NKITITNDKG RLSKEEIERM VLDAEKYKAE  
DEVQREKIAA KNALESYAFN MKSVVSDEGL KGKISESDKN KILDKCNELL SWLEVNQLAE  
KDEFDHRKE LEQMCNPIIT KLYQGGCTGP ACGTGYVPGR PATGPTIEEV D

**Tag:** N-terminal His-tag

**Activity:** Not tested

**Concentration:** Prior to lyophilization: 200 µg/ml

**Buffer:** Prior to lyophilization: PBS, pH 7.4, containing 0.01% Sarcosyl, 1 mM DTT, 5% Trehalose and Proclin-300.

**Note:** This product is for research use only.