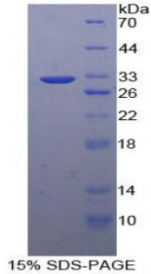


## Human Insulin Like Growth Factor 2 Receptor (IGF2R) Protein

Catalogue No.: abx067237



SDS-PAGE analysis of Human Insulin Like Growth Factor 2 Receptor (IGF2R) Protein.

Recombinant Insulin Like Growth Factor 2 Receptor (IGF2R) is a recombinant protein from Human. It is produced in E.coli using Prokaryotic expression.

**Target:** Insulin Like Growth Factor 2 Receptor (IGF2R)

**Origin:** Human

**Host:** E. coli

**Tested Applications:** ELISA, WB, IP, SDS-PAGE

**Purity:** > 95%

**Form:** Lyophilized

**Conjugation:** Unconjugated

**Storage:** Store at 2-8 °C for up to one month. Store at -80 °C for up to one year. Avoid repeated freeze/thaw cycles.

**Expression:** Recombinant

**Molecular Weight:** 31.9 kDa

**Swiss Prot:** [P11717](#)

**Sequence Fragment:** Asn2167-Ala2442

**Sequence:** MGHHHHHHSG SEF- NGDN YLYEIQ LSSI TSSRNPACSG ANICQVKPND QHFSRKVGTS  
DKTKYYLQDG DLDVVFASSS KCGKDKTKSV SSTIFFHCDP LVEDGIPEFS HETADCQYLF  
SWYTSAVCPL GVGFDSENP G DDGQMHKGLS ERSQAVGAVL SLLLVALTCC LLALLLYKKE  
RRETVISKLT TCCRSSNV S YKYSKVNKEE ETDENETEWL MEEIQLPPPR QGKEGQENGH  
ITTKSVKALS SLHGDDQDSE DEVLTIPEVK VHSGRGAGAE SSHPVRNAQS NA

Abbexa Ltd, Innovation Centre, Cambridge Science Park, Cambridge, CB4 0EY, UK  
Telephone: +44 (0) 1223 755950 - Fax: +44 (0) 1223 755951 - E-Mail: info@abbexa.com

**Tag:** N-terminal His-tag

**Activity:** Not tested

**Concentration:** Prior to lyophilization: 200 µg/ml

**Buffer:** Prior to lyophilization: PBS, pH 7.4, containing 0.01% Sarcosyl, 1 mM DTT, 5% Trehalose and Proclin-300.

**Note:** This product is for research use only.