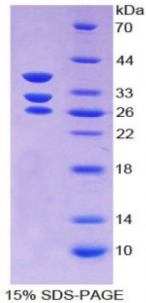


Mouse Islet Cell Autoantigen 1 (ICA1) Protein

Catalogue No.: abx067566



SDS-PAGE analysis of Mouse ICA1 Protein.

Recombinant Islet Cell Autoantigen 1 (ICA1) is a recombinant protein from Mouse. It is produced in E.coli using Prokaryotic expression.

Target:	Islet Cell Autoantigen 1 (ICA1)
Origin:	Mouse
Host:	E. coli
Tested Applications:	ELISA, WB, IP, SDS-PAGE
Purity:	> 95%
Form:	Lyophilized
Conjugation:	Unconjugated
Storage:	Store at 2-8 °C for up to one month. Store at -80 °C for up to one year. Avoid repeated freeze/thaw cycles.
Expression:	Recombinant
Molecular Weight:	35.9 kDa
Swiss Prot:	P97411
Sequence Fragment:	Met1-Gly257
Sequence:	MHHHHHHSSGLVPRGSGMKETA AAKFERQHMDSPDLGTDDDDKAMADIGSEF-MSGHKCYSWE LQDRFAQDKS VVNKMQQKYW ETKQAFIKAT GKKEDEHVVA SDADLDAKLE LFHSIQRTCL DLSKAIVLYQ KRICFLSQEE NELGKFLRSQ GFQDKTRAGK MMQATGKALC FSSQQLALR NPLCRFHQEV ETFRHRAISD TWLTVNRMEQ YRTEYRGALL WMKDV SQELD PDLYKQMEKF RKVQTQVRLA KKNFDKLMKD VCQKVDLLGA SRCNLLSHML ATYQTLLHF WEKTSHTMAA IHESFKG

Abbexa Ltd, Innovation Centre, Cambridge Science Park, Cambridge, CB4 0EY, UK
Telephone: +44 (0) 1223 755950 - Fax: +44 (0) 1223 755951 - E-Mail: info@abbexa.com

Tag: Two N-terminal tags, His-tag and S-tag

Activity: Not tested

Concentration: Prior to lyophilization: 200 µg/ml

Buffer: Prior to lyophilization: PBS, pH 7.4, containing 0.01% Sarcosyl, 1 mM DTT, 5% Trehalose and Proclin-300.

Note: This product is for research use only.