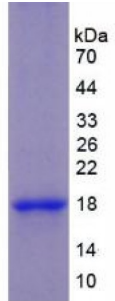


Abbexa Ltd, Innovation Centre, Cambridge Science Park, Cambridge, CB4 0EY, UK
Telephone: +44 (0) 1223 755950 - Fax: +44 (0) 1223 755951 - E-Mail: info@abbexa.com

Human Keratin 1 (KRT1) Protein

Catalogue No.: abx067601



SDS-PAGE analysis of Human Keratin 1 Protein.

Recombinant Keratin 1 (KRT1) is a recombinant protein from Human. It is produced in E.coli using Prokaryotic expression.

Target: Keratin 1 (KRT1)

Origin: Human

Host: E. coli

Tested Applications: ELISA, WB, IP, SDS-PAGE

Purity: > 95%

Form: Lyophilized

Conjugation: Unconjugated

Storage: Store at 2-8 °C for up to one month. Store at -80 °C for up to one year. Avoid repeated freeze/thaw cycles.

Expression: Recombinant

Molecular Weight: 15.1 kDa

Swiss Prot: [P04264](#)

Sequence Fragment: Glu487-Arg644

Sequence: MGHHHHHSGSEF-EGEE SRMSGECAPN VSVSVSTSH TISGGGSRGG GGGGYGSGGS
SYGSGGGSYG SGGGGGGGRG SYGSGGSSYG SGGGSYGSGG GGGGHGSYGS GSSSGGYRGG
SGGGGGGSSG GRGSGGGSSG GSIGGRGSSS GGVKSSGGSS SVKVFSTTYS GVTR

Tag: N-terminal His-tag

Abbexa Ltd, Innovation Centre, Cambridge Science Park, Cambridge, CB4 0EY, UK
Telephone: +44 (0) 1223 755950 - Fax: +44 (0) 1223 755951 - E-Mail: info@abbexa.com

Activity: Not tested

Concentration: Prior to lyophilization: 200 µg/ml

Buffer: Prior to lyophilization: 20 mM Tris, 150 mM NaCl, pH 8.0, containing 1 mM EDTA, 1 mM DTT, 0.01% Sarcosyl, 5% Trehalose and Proclin-300.

Note: This product is for research use only.