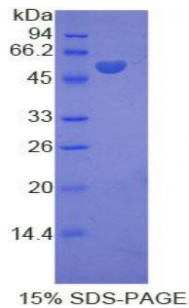


Abbexa Ltd, Innovation Centre, Cambridge Science Park, Cambridge, CB4 0EY, UK
Telephone: +44 (0) 1223 755950 - Fax: +44 (0) 1223 755951 - E-Mail: info@abbexa.com

Rat Kinesin Family, Member 5A (KIF5A) Protein

Catalogue No.: abx067660



SDS-PAGE analysis of Rat KIF5A Protein.

Recombinant Kinesin Family, Member 5A (KIF5A) is a recombinant protein from Rat. It is produced in E.coli using Prokaryotic expression.

Target: Kinesin Family, Member 5A (KIF5A)

Origin: Rat

Host: E. coli

Tested Applications: ELISA, WB, IP, SDS-PAGE

Purity: > 95%

Form: Lyophilized

Conjugation: Unconjugated

Storage: Store at 2-8 °C for up to one month. Store at -80 °C for up to one year. Avoid repeated freeze/thaw cycles.

Expression: Recombinant

Molecular Weight: 54.5 kDa

Swiss Prot: [Q6QLM7](#)

Sequence Fragment: Ile823-Ser1027

Abbexa Ltd, Innovation Centre, Cambridge Science Park, Cambridge, CB4 0EY, UK
Telephone: +44 (0) 1223 755950 - Fax: +44 (0) 1223 755951 - E-Mail: info@abbexa.com

Sequence: MSPILGYWKI KGLVQPTRL L LEYLEEKYEE HLYERDEGDK WRNKKFELGL EFPNLPYYID
GDVCLTQSMA IIRYIADKHN MLGGCPKERA EISMLEGAVL DIRYGVSRIA YSKDFETLKV
DFLSKLPEML KMFEDRLCHK TYLNGDHVTH PDFMLYDALD VVLYMDPMCL DAFPKLVCFK
KRIEAIQID KYLKSSKYIA WPLQGQWQATF GGGDHPPKSD GSTSGSGHHH HHSAGLVPR
GSTAIGMKET AAKFERQHM DSPDLGTLEV LFQGPLGS-IHSQKQKI SFLENNLEQL TEVHKQLVRD
NADLRCELPK LEKRLRATAE RVKALEGALK EAKEGAMKDK RRYQQEVDRI KEAVRYKSSG
KRGHSAQIAK PVRPGHYPAS SPTNPYGTRS PECISYTNL FQNYQNLHLQ AAPSSSTSDVY
FASNGATSV A PLASYQKANT DNGNATDIND NRSDLPCGYE AEDPAKLFPL HQETAAS

Tag: Two N-terminal tags, His-tag and GST-tag

Activity: Not tested

Concentration: Prior to lyophilization: 200 µg/ml

Buffer: Prior to lyophilization: PBS, pH 7.4, containing 0.01% Sarcosyl, 1 mM DTT, 5% Trehalose and Proclin-300.

Note: This product is for research use only.