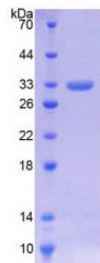


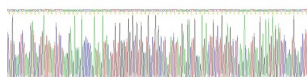
Abbexa Ltd, Innovation Centre, Cambridge Science Park, Cambridge, CB4 0EY, UK  
Telephone: +44 (0) 1223 755950 - Fax: +44 (0) 1223 755951 - E-Mail: [info@abbexa.com](mailto:info@abbexa.com)

## Human Lactate Dehydrogenase A (LDHA) Protein

Catalogue No.: abx067672



SDS-PAGE analysis using LDHA Protein.



Gene sequencing extract of LDHA Protein.

Recombinant Lactate Dehydrogenase A (LDHA) is a recombinant protein from Human. It is produced in E.coli using Prokaryotic expression.

**Target:** Lactate Dehydrogenase A (LDHA)

**Origin:** Human

**Host:** E. coli

**Tested Applications:** WB, SDS-PAGE

**Purity:** > 95%

**Form:** Lyophilized

**Reconstitution:** Reconstitute in 20 mM Tris, 150 mM NaCl (pH 8.0) to a concentration of 0.1 to 1 mg/ml. Do not vortex.

**Conjugation:** Unconjugated

**Storage:** Store at 2-8 °C for up to one month. Store at -80 °C for up to one year. Avoid repeated freeze/thaw cycles.

**Expression:** Recombinant

**Molecular Weight:** 40.8 kDa (Predicted Molecular Mass), 33 kDa (Accurate Molecular Mass as determined by SDS-PAGE)

Possible reasons why the actual band size differs from the predicted band size:

1. Splice variants. Alternative splicing may create different sized proteins from the same gene.
2. Relative charge. The composition of amino acids may affect the charge of the protein.
3. Post-translational modification. Phosphorylation, glycosylation, methylation etc. may affect the band size.
4. Post-translational cleavage. Many proteins are synthesised as pro-proteins, and then cleaved to give the active form.
5. Polymerisation of the target protein. Dimerisation, multimerisation etc. will increase the band size observed.

**Swiss Prot:** [P00338](#)

**Sequence Fragment:** Met1-Phe332 plus VPVC between Ser197 and Val198

**Sequence:** MATLKDQLIY NLLKEEQTPQ NKITVVGVA VGMACAISIL MKDLADELAL VDVIEDKLKG  
EMMDLQHGSL FLRTPKIVSG KDYNVTANSK LVIITAGARQ QEGESRLNLV QRNVNIFKFI  
IPNVVKYSPN CKLLIVSNPV DILTYVAWKI SGFPKNRVIG SGCNLD SARF RYLMGERLGV  
HPLSCHGWVL GEHGDSSVPV CVPVWSGMNV AGVSLKTLHP DLGTDKDKEQ WKEVHKQVVE  
SAYEVIKLG YTSWAIGLSV ADLAESIMKN LRRVHPVSTM IKGLYGKDD VFLSVPCILG  
QNGISDLVKV TLTSEEEARL KKSADTLWGI QKELQF

**Tag:** N-terminal His-tag

**Activity:** Not tested

**Concentration:** Prior to lyophilization: 200 µg/ml

**Buffer:** Prior to lyophilization: 20 mM Tris, 150 mM NaCl, pH 8.0, containing 0.01% Sarcosyl, 5% Trehalose and Proclin-300.

**Note:** This product is for research use only.