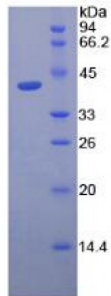


Abbexa Ltd, Innovation Centre, Cambridge Science Park, Cambridge, CB4 0EY, UK  
Telephone: +44 (0) 1223 755950 - Fax: +44 (0) 1223 755951 - E-Mail: info@abbexa.com

## Dog Lactoferrin (LTF) Protein

Catalogue No.: abx067678



SDS-PAGE analysis of Dog Lactoferrin Protein.

Recombinant Lactoferrin (LTF) is a recombinant protein from Dog. It is produced in E.coli using Prokaryotic expression.

**Target:** Lactoferrin (LTF)

**Origin:** Dog

**Host:** E. coli

**Tested Applications:** ELISA, WB, IP, SDS-PAGE

**Purity:** > 95%

**Form:** Lyophilized

**Conjugation:** Unconjugated

**Storage:** Store at 2-8 °C for up to one month. Store at -80 °C for up to one year. Avoid repeated freeze/thaw cycles.

**Expression:** Recombinant

**Molecular Weight:** 41.1 kDa

**Swiss Prot:** [F1PR54](#)

**Sequence Fragment:** Cys28-Lys351

Abbexa Ltd, Innovation Centre, Cambridge Science Park, Cambridge, CB4 0EY, UK  
Telephone: +44 (0) 1223 755950 - Fax: +44 (0) 1223 755951 - E-Mail: info@abbexa.com

**Sequence:** MHHHHHSSG LVPRGSGMKE TAAAKFERQH MDSPDLGTDD DDKAMADIGS EF- CTT  
SKAEAKKCSK FQVNMKKVGG PIVSCTRKAS RQECIQAIKA NKADAVTLDG GLVFEAGLEP  
NKLRPIAAEV YGTQTKQQIH YYAVAIKKG TNFQLNQLQG VRSCHTGLGR SAGWNIPIGT  
LRPFLNWTGP PEPLLEAVAK FFSASCVPCADGKQYPNLGR LCAGTEQNKAC ACSSQEPYFG  
YSGAFKCLQD GAGDVAFVRD STVFENLPDK ADQDKYELLC LNNTRKPVDA FKDCHLARVP  
SHAVVARSVG GKEDLIWRLK QKAQENFGKD KSSAFQLFGS PSGEKDLLFK DSAIGFLRIP  
SNIDSELYLG FNYINAIQSL K

**Tag:** Two N-terminal tags, His-tag and S-tag

**Activity:** Not tested

**Concentration:** Prior to lyophilization: 200 µg/ml

**Buffer:** Prior to lyophilization: PBS, pH 7.4, containing 0.01% Sarcosyl, 1 mM DTT, 5% Trehalose and Proclin-300.

**Note:** This product is for research use only.