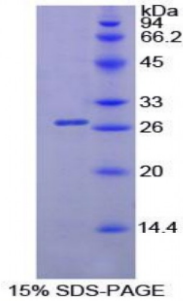


Mouse Lipase, Pancreatic (PL) Protein

Catalogue No.: abx067795



SDS-PAGE analysis of Mouse Lipase, Pancreatic Protein.

Recombinant Lipase, Pancreatic (PL) is a recombinant protein from Mouse. It is produced in E.coli using Prokaryotic expression.

Target: Lipase, Pancreatic (PL)

Origin: Mouse

Host: E. coli

Tested Applications: ELISA, WB, IP, SDS-PAGE

Purity: > 95%

Form: Lyophilized

Conjugation: Unconjugated

Storage: Store at 2-8 °C for up to one month. Store at -80 °C for up to one year. Avoid repeated freeze/thaw cycles.

Expression: Recombinant

Molecular Weight: 26.7 kDa

Swiss Prot: [Q6P8U6](#)

Sequence Fragment: Gly201-Leu412

Sequence: MGSSHHHHHH SSGLVPRGSH MASMTGGQQM GRGS- GTPEEVRLDP TDAQFVDAIH TDAGPIIPNL
GFGMSQTVGH LDFFPNGGIE MPGCQKNILS QIVDIDGIWE GTRNFAACNH LRSYKFYTD
IVNPTGFAGF SCSSYSLFTA NKCFPCGSGG CPQMGHYADR YPGKTSRLYQ TFYLNTGDKS
N FARWRYQVT VTLGQKVTG HILVSLFGNG GNSKQYEVFK GSLQPGTSHV NEFSDSDVDVG DL

Abbexa Ltd, Innovation Centre, Cambridge Science Park, Cambridge, CB4 0EY, UK
Telephone: +44 (0) 1223 755950 - Fax: +44 (0) 1223 755951 - E-Mail: info@abbexa.com

Tag: Two N-terminal tags, His-tag and T7-tag

Activity: Not tested

Concentration: Prior to lyophilization: 200 µg/ml

Buffer: Prior to lyophilization: PBS, pH 7.4, containing 0.01% Sarcosyl, 1 mM DTT, 5% Trehalose and Proclin-300.

Note: This product is for research use only.