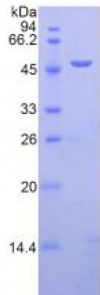


Human Lysosomal Associated Membrane Protein 2 (LAMP2) Protein

Catalogue No.: abx067862



SDS-PAGE analysis of Human LAMP2 Protein.

Recombinant Lysosomal Associated Membrane Protein 2 (LAMP2) is a recombinant protein from Human. It is produced in E.coli using Prokaryotic expression.

Target: Lysosomal Associated Membrane Protein 2 (LAMP2)**Origin:** Human**Host:** E. coli**Tested Applications:** ELISA, WB, IP, SDS-PAGE**Purity:** > 95%**Form:** Lyophilized**Conjugation:** Unconjugated**Storage:** Store at 2-8 °C for up to one month. Store at -80 °C for up to one year. Avoid repeated freeze/thaw cycles.**Expression:** Recombinant**Molecular Weight:** 47 kDa**Swiss Prot:** [P13473](#)**Sequence Fragment:** Lys193-Asn375

Abbexa Ltd, Innovation Centre, Cambridge Science Park, Cambridge, CB4 0EY, UK
Telephone: +44 (0) 1223 755950 - Fax: +44 (0) 1223 755951 - E-Mail: info@abbexa.com

Sequence: MRNKKFELGL EFPNLPYYID GDVKLTQSMA IIRYIADKHN MLGGCPKERA EISMLEGAVL
DIRYGVSRIA YSKDFETLKV DFLSKLPEML KMFEDRLCHK TYLNGDHVTH PDFMLYDALD
VVLYMDPMCL DAFPKLVCFK KRIEAIQID KYLKSSKYIA WPLQGQWQATF GGGDHPPKSD
GSTSGSGHHH HHSAGLVPR GSTAIGMKET AAACFERQHM DSPDLGTLEV LFQGPLGSEF-
KTSTVAPT IHTTVPSPTT TPTPKKEKPEA GTYSVNNGND TLLATMGLQ LNITQDKVAS VININPNTTH
STGSCRSHA LLRLNSSTIK YLDFVFAVKN ENRFYLKEVN ISMYLVNGSV FSIANNLSY
WDAPLGSSYM CNKEQTVSVS GAFQINTFDL RVQPFNVTQG KYSTAECSA DSDLN

Tag: Two N-terminal tags, His-tag and GST-tag

Activity: Not tested

Concentration: Prior to lyophilization: 200 µg/ml

Buffer: Prior to lyophilization: 20 mM Tris, 150 mM NaCl, pH 8.0, containing 1 mM EDTA, 1 mM DTT, 0.01% Sarcosyl, 5% Trehalose and Proclin-300.

Note: This product is for research use only.