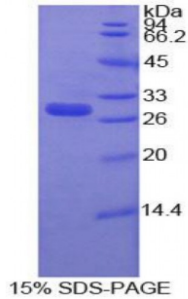


Human Matrix Metalloproteinase 16 (MMP16) Protein

Catalogue No.: abx067960



SDS-PAGE analysis of Human MMP16 Protein.

Recombinant Matrix Metalloproteinase 16 (MMP16) is a recombinant protein from Human. It is produced in E.coli using Prokaryotic expression.

Target: Matrix Metalloproteinase 16 (MMP16)

Origin: Human

Host: E. coli

Tested Applications: ELISA, WB, IP, SDS-PAGE

Purity: > 95%

Form: Lyophilized

Conjugation: Unconjugated

Storage: Store at 2-8 °C for up to one month. Store at -80 °C for up to one year. Avoid repeated freeze/thaw cycles.

Expression: Recombinant

Molecular Weight: 29.1 kDa

Swiss Prot: [P51512](#)

Sequence Fragment: Ala351-Asn557

Sequence:
 MGSSHHHHHH SGLVPRGSH MASMTGGQQM GRGSEFELRR QAC- AILRREMFVF
 KDQWFWRVRN NRVMDGYPMQ ITYFWRGLPP SIDAVYENS DGNFVFFKGNK YWVFKDITLQ
 PGYPHDLITL GSGIPPHGID SAIWWEDVGK TYFFKGDYRW RYSEEMKTMD PGYPKPITWW
 KGIPESPQGA FVHKENGFTY FYKGKEYWKF NNQILKVEPG YPRSILKDFM GCDGPTDRVK
 EGHSPDDVD IVIKLDN

Abbexa Ltd, Innovation Centre, Cambridge Science Park, Cambridge, CB4 0EY, UK
Telephone: +44 (0) 1223 755950 - Fax: +44 (0) 1223 755951 - E-Mail: info@abbexa.com

Tag: Two N-terminal tags, His-tag and T7-tag

Activity: Not tested

Concentration: Prior to lyophilization: 200 µg/ml

Buffer: Prior to lyophilization: PBS, pH 7.4, containing 0.01% Sarcosyl, 1 mM DTT, 5% Trehalose and Proclin-300.

Note: This product is for research use only.