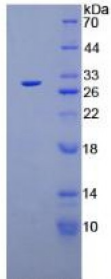


Abbexa Ltd, Innovation Centre, Cambridge Science Park, Cambridge, CB4 0EY, UK
Telephone: +44 (0) 1223 755950 - Fax: +44 (0) 1223 755951 - E-Mail: info@abbexa.com

Mouse Plasminogen (Plg) Protein

Catalogue No.: abx068559



SDS-PAGE analysis of Mouse Plasminogen Protein.

Recombinant Plasminogen is a recombinant protein from Mouse. It is produced in E.coli using Prokaryotic expression.

Target: Plasminogen (Plg)

Origin: Mouse

Host: E. coli

Tested Applications: ELISA, WB, IP, SDS-PAGE

Purity: > 95%

Form: Lyophilized

Conjugation: Unconjugated

Storage: Store at 2-8 °C for up to one month. Store at -80 °C for up to one year. Avoid repeated freeze/thaw cycles.

Expression: Recombinant

Molecular Weight: 26.8 kDa

Swiss Prot: [P20918](#)

Sequence Fragment: Val582-Asn812

Sequence: MGHHHHHHSGS-VVGGCVANP HSWPWQISLR TRFTGQHFCG GTLIAPEWVL TAAHCLEKSS
RPEFYKVILG AHEEYIRGLD VQEISVAKLI LEPNNRDIAL LKLSRPATIT DKVIPACLPS PNYMVADRTI
CYITGWGETQ GTFGAGRLKE AQLPVIENKV CNRVEYLNNR VKSTELCAGQ LAGGVDSCQG
DSGGPLVCFE KDKYILQGVV SWGLGCARPV KPGVYVVRVSR FVDWIEREMR NN

Tag: N-terminal His-tag

Abbexa Ltd, Innovation Centre, Cambridge Science Park, Cambridge, CB4 0EY, UK
Telephone: +44 (0) 1223 755950 - Fax: +44 (0) 1223 755951 - E-Mail: info@abbexa.com

Activity: Not tested

Concentration: Prior to lyophilization: 200 µg/ml

Buffer: Prior to lyophilization: PBS, pH 7.4, containing 0.01% Sarcosyl, 1 mM DTT, 5% Trehalose and Proclin-300.

Note: This product is for research use only.