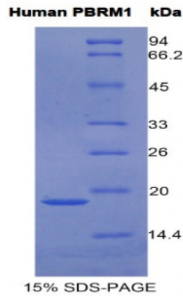


Abbexa Ltd, Innovation Centre, Cambridge Science Park, Cambridge, CB4 0EY, UK
Telephone: +44 (0) 1223 755950 - Fax: +44 (0) 1223 755951 - E-Mail: info@abbexa.com

Human Polybromo 1 (PBRM1) Protein

Catalogue No.: abx068634



SDS-PAGE analysis of Human Polybromo 1 Protein.

Recombinant Polybromo 1 (PBRM1) is a recombinant protein from Human. It is produced in E.coli using Prokaryotic expression.

Target: Polybromo 1 (PBRM1)

Origin: Human

Host: E. coli

Tested Applications: ELISA, WB, IP, SDS-PAGE

Purity: > 95%

Form: Lyophilized

Conjugation: Unconjugated

Storage: Store at 2-8 °C for up to one month. Store at -80 °C for up to one year. Avoid repeated freeze/thaw cycles.

Expression: Recombinant

Molecular Weight: 15.9 kDa

Swiss Prot: [Q86U86](#)

Sequence Fragment: Gly1152-Gln1273

Sequence: MGHHHHHSGSEF-GRIEKVWVR DGAAYFYGPI FHPETEHE PTKMFYKKEV FLSNLEETCP
MTCILGKCAV LSKDFLSCR PTEIPENDIL LCESRYNESD KQMKKFKGLK RFSLSAKVVD
DEIYYFRKPI VPQ

Tag: N-terminal His-tag

Abbexa Ltd, Innovation Centre, Cambridge Science Park, Cambridge, CB4 0EY, UK
Telephone: +44 (0) 1223 755950 - Fax: +44 (0) 1223 755951 - E-Mail: info@abbexa.com

Activity: Not tested

Concentration: Prior to lyophilization: 200 µg/ml

Buffer: Prior to lyophilization: PBS, pH 7.4, containing 0.01% Sarcosyl, 1 mM DTT, 5% Trehalose and Proclin-300.

Note: This product is for research use only.