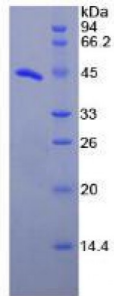


**Human Prostaglandin E Synthase, Microsomal (PTGES) Protein**

Catalogue No.: abx068702



SDS-PAGE analysis of Human PTGES Protein.

Recombinant Prostaglandin E Synthase, Microsomal (PTGES) is a recombinant protein from Human. It is produced in E.coli using Prokaryotic expression.

**Target:** Prostaglandin E Synthase, Microsomal (PTGES)**Origin:** Human**Host:** E. coli**Tested Applications:** ELISA, WB, IP, SDS-PAGE**Purity:** > 95%**Form:** Lyophilized**Conjugation:** Unconjugated**Storage:** Store at 2-8 °C for up to one month. Store at -80 °C for up to one year. Avoid repeated freeze/thaw cycles.**Expression:** Recombinant**Molecular Weight:** 46.5 kDa**Swiss Prot:** [O14684](#)**Sequence Fragment:** Thr21-Ala148

Abbexa Ltd, Innovation Centre, Cambridge Science Park, Cambridge, CB4 0EY, UK  
Telephone: +44 (0) 1223 755950 - Fax: +44 (0) 1223 755951 - E-Mail: info@abbexa.com

**Sequence:** MSPILGYWKI KGLVQPTRLLEYLEEKYEE HLYERDEGDK WRNKKFELGL EFPNLPYYID  
GDVKLTQSMA IIRYIADKHN MLGGCPKERA EISMLEGAVL DIRYGVSRIA YSKDFETLKV  
DFLSKLPEML KMFEDRLCHK TYLNGDHVTH PDFMLYDALD VVLYMDPMCL DAFPKLVCFK  
KRIEAIQID KYLKSSKYIA WPLQGQWQATF GGGDHPPKSD GSTSGSGHHH HHSAGLVPR  
GSTAIGMKET AAKFERQHM DSPDLGTLEV LFQGPLGSEF-TLLVIKMYVV AIITGQVRLR  
KKAFANPEDA LRHGGPQYCR SDPDVERCLR AHRNDMETIY PFLFLGFVYS FLGPNPFVAW  
MHFLVFLVGR VAHTVAYLGK LRAPIRSVTY TLAQLPCASM ALQILWEA

**Tag:** Two N-terminal tags, His-tag and GST-tag

**Activity:** Not tested

**Concentration:** Prior to lyophilization: 200 µg/ml

**Buffer:** Prior to lyophilization: 20 mM Tris, 150 mM NaCl, pH 8.0, containing 1 mM EDTA, 1 mM DTT, 0.01% Sarcosyl, 5% Trehalose and Proclin-300.

**Note:** This product is for research use only.