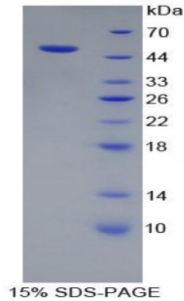


Abbexa Ltd, Innovation Centre, Cambridge Science Park, Cambridge, CB4 0EY, UK  
Telephone: +44 (0) 1223 755950 - Fax: +44 (0) 1223 755951 - E-Mail: info@abbexa.com

## Human Proteasome 26S Subunit, ATPase 3 (PSMC3) Protein

Catalogue No.: abx068718



SDS-PAGE analysis of Human PSMC3 Protein.

Recombinant Proteasome 26S Subunit, ATPase 3 (PSMC3) is a recombinant protein from Human. It is produced in E.coli using Prokaryotic expression.

**Target:** Proteasome 26S Subunit, ATPase 3 (PSMC3)

**Origin:** Human

**Host:** E. coli

**Tested Applications:** ELISA, WB, IP, SDS-PAGE

**Purity:** > 95%

**Form:** Lyophilized

**Conjugation:** Unconjugated

**Storage:** Store at 2-8 °C for up to one month. Store at -80 °C for up to one year. Avoid repeated freeze/thaw cycles.

**Expression:** Recombinant

**Molecular Weight:** 52.9 kDa

**Swiss Prot:** [P17980](#)

**Sequence Fragment:** Asn2-Ala439

Abbexa Ltd, Innovation Centre, Cambridge Science Park, Cambridge, CB4 0EY, UK  
Telephone: +44 (0) 1223 755950 - Fax: +44 (0) 1223 755951 - E-Mail: info@abbexa.com

**Sequence:** MGSSHHHHH SSGLVPRGSH MASMTGGQQM GRGSEF- NLLPNIESP VTRQEKMATV  
WDEAEQDGIG EEVLKMSTEE IIQRTRLLDS EIKIMKSEVL RVTHELQAMK DKIKENSEKI  
KVNKTLPLYLV SNVIELLDVD PNDQEEDGAN IDLDSQRK GK CAVIKTSTRQ TYFLPVIGLV  
DAEKLKPGDL VGVNKDSYLI LETLPTEYDS RVKAMEVDER PTEQYSDIGG LDKQIQELVE  
AIVLPMNHKE KFENLGIQPP KGVLMYGPPG TGKTLLARAC AAQTKATFLK LAGPQLVQMF  
IGDGAKLVRD AFALAKEKAP SIIFIDELDA IGTKRFDSEK AGDREVQRTM LELLNQLDGF  
QPNTQVKVIA ATNRVDILDP ALLRSGRLDR KIEFPMPNEE ARARIMQIHS RKMNVSPDVN  
YEELARCTDD FNGAQCKAVC VEAGMIALRR GATELTHEDY MEGILEVQAK KKANLQYYA

**Tag:** Two N-terminal tags, His-tag and T7-tag

**Activity:** Not tested

**Concentration:** Prior to lyophilization: 200 µg/ml

**Buffer:** Prior to lyophilization: PBS, pH 7.4, containing 0.01% Sarcosyl, 1 mM DTT, 5% Trehalose and Proclin-300.

**Note:** This product is for research use only.