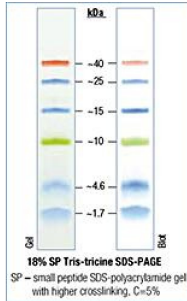


## Prestained Dual Color Protein Molecular Weight Marker (1.7-40 kDa)

Catalogue No.: abx090664



5% SDS-PAGE analysis of 18% small peptide with tris-tricine.

Prestained protein ladders / marker is designed for monitoring protein separation during SDS-polyacrylamide gel electrophoresis, verifying of Western transfer efficiency on PVDF, nylon and nitrocellulose membranes and approximate sizing of proteins. It is also used to approximate sizing of proteins on SDS-PAGE and Western blots. It is composed of prestained recombinant prokaryotic proteins. Prestained Protein Molecular Weight Marker is a three-color molecular weight standard, contains 6 prestained natural proteins with molecular weights from 1.7 kDa to 40 kDa.

**Tested Applications:** WB, SDS-PAGE

**Storage:** Store at 4°C for up to 3 months. For long-term storage, store at -20°C.

**Directions for use:**

1. Thaw the ladder either at room temperature or at 37 °C for a few minutes to dissolve precipitated solids thoroughly. Do not boil.
2. Mix gently but thoroughly, to ensure that the solution is homogeneous.
3. Load the following volumes of the ladder:  
 Small/Mini SDS-polyacrylamide gel: 5 µl per well (0.75-1.0 mm thickness)  
 Large SDS-polyacrylamide gel: 10 µl per well (0.75-1.0 mm thickness)

**Note:** This product is for research use only.