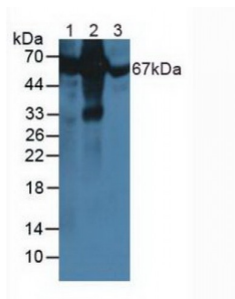


Abbexa Ltd, Innovation Centre, Cambridge Science Park, Cambridge, CB4 0EY, UK
Telephone: +44 (0) 1223 755950 - Fax: +44 (0) 1223 755951 - E-Mail: info@abbexa.com

Albumin (ALB) Antibody

Catalogue No.: abx100078



Western blot analysis of (1) Rat Liver Tissue, (2) Rat Serum and (3) Bovine Serum.

Polyclonal Antibody to Albumin (ALB).

Target: Albumin (ALB)

Reactivity: Monkey

Host: Rabbit

Clonality: Polyclonal

Tested Applications: WB, IHC, IF/ICC, IP

Recommended dilutions: WB: 0.5-2 µg/ml, IHC-F: 5-20 µg/ml, IHC-P: 5-20 µg/ml, IF/ICC: 5-20 µg/ml. Optimal dilutions/concentrations should be determined by the end user.

Immunogen: [abx168613](#) - Native Protein ALB.

Purification: Antigen-specific affinity chromatography followed by Protein A affinity chromatography.

Form: Liquid

Conjugation: Unconjugated

Storage: Store at 4 °C for frequent use. Aliquot and store at -20 °C for one year. Avoid repeated freeze/thaw cycles.

Buffer: 0.01 M PBS, pH 7.4, containing 0.05% Proclin-300, 50% glycerol.

Note: This product is for research use only.