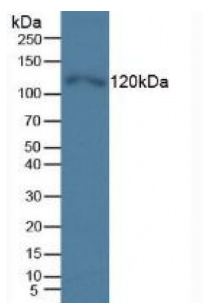


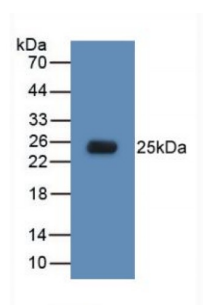
Abbexa Ltd, Innovation Centre, Cambridge Science Park, Cambridge, CB4 0EY, UK  
Telephone: +44 (0) 1223 755950 - Fax: +44 (0) 1223 755951 - E-Mail: [info@abbexa.com](mailto:info@abbexa.com)

## Toll Like Receptor 5 (TLR5) Antibody

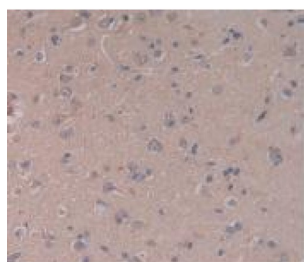
Catalogue No.: abx102073



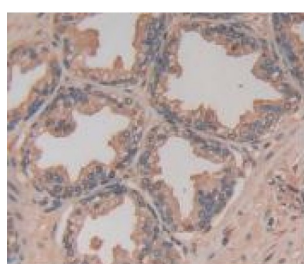
Western blot analysis of Human HeLa cells.



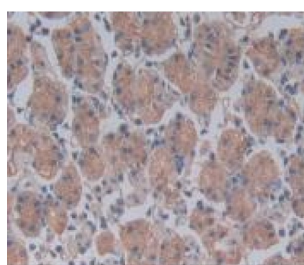
Western blot analysis of recombinant Human TLR5.



IHC-P analysis of Human Brain Tissue, with DAB staining.

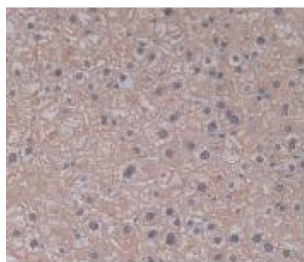


IHC-P analysis of Human Prostate Gland Tissue, with DAB staining.



IHC-P analysis of Human Stomach Tissue, with DAB staining.

Abbexa Ltd, Innovation Centre, Cambridge Science Park, Cambridge, CB4 0EY, UK  
Telephone: +44 (0) 1223 755950 - Fax: +44 (0) 1223 755951 - E-Mail: [info@abbexa.com](mailto:info@abbexa.com)



IHC-P analysis of Human Liver Tissue, with DAB staining.

Toll Like Receptor 5 Antibody is a Mouse Monoclonal against Toll Like Receptor 5.

**Target:** Toll Like Receptor 5 (TLR5)

**Reactivity:** Human

**Host:** Mouse

**Clonality:** Monoclonal

**Tested Applications:** WB, IHC, IF/ICC, IP

**Recommended dilutions:** Optimal dilutions/concentrations should be determined by the end user.

**Immunogen:** Tyr693-Ser858

**Purification:** Protein A + Protein G affinity chromatography.

**Form:** Liquid

**Isotype:** IgG<sub>2b</sub> Kappa

**Conjugation:** Unconjugated

**Storage:** Store at 4 °C for frequent use. Aliquot and store at -20 °C for one year. Avoid repeated freeze/thaw cycles.

**Swiss Prot:** [O60602](#)

**Buffer:** 0.01 M PBS, pH 7.4, containing 0.05% Proclin-300, 50% glycerol.

**Note:** This product is for research use only.