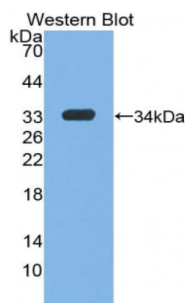


Abbexa Ltd, Innovation Centre, Cambridge Science Park, Cambridge, CB4 0EY, UK
Telephone: +44 (0) 1223 755950 - Fax: +44 (0) 1223 755951 - E-Mail: info@abbexa.com

Insulin Like Growth Factor 1 (IGF1) Antibody

Catalogue No.: abx102886



Western blot analysis of the recombinant protein.

Polyclonal Antibody to Insulin Like Growth Factor 1 (Insulin Like Growth Factor 1 (IGF1)) (Insulin Like Growth Factor 1 (IGF1)).

Target:	Insulin Like Growth Factor 1 (IGF1)
Reactivity:	Pig
Host:	Rabbit
Clonality:	Polyclonal
Tested Applications:	WB, IHC, IF/ICC, IP
Recommended dilutions:	Optimal dilutions/concentrations should be determined by the end user.
Immunogen:	IGF1 (Gly49-Ala118)
Purification:	Antigen-specific affinity chromatography followed by Protein A affinity chromatography.
Form:	Liquid
Conjugation:	Unconjugated
Storage:	Store at 4 °C for frequent use. Aliquot and store at -20 °C for one year. Avoid repeated freeze/thaw cycles.
Swiss Prot:	P16545
Buffer:	PBS, pH 7.4, containing 0.02% NaN ₃ , 50% glycerol.
Note:	This product is for research use only.