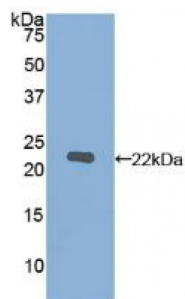


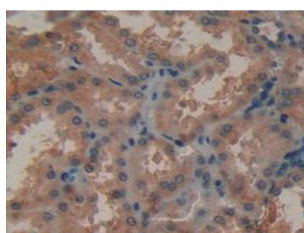
Abbexa Ltd, Innovation Centre, Cambridge Science Park, Cambridge, CB4 0EY, UK
Telephone: +44 (0) 1223 755950 - Fax: +44 (0) 1223 755951 - E-Mail: info@abbexa.com

Matrix Metalloproteinase 12 (MMP12) Antibody

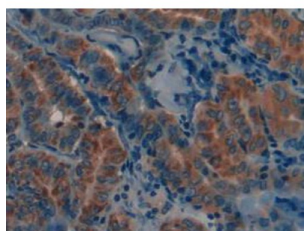
Catalogue No.: abx102900



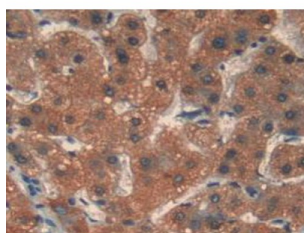
Western blot analysis of recombinant Human MMP12.



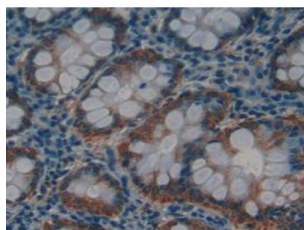
IHC-P analysis of Human Kidney Tissue, with DAB staining.



IHC-P analysis of Human Thyroid Cancer Tissue, with DAB staining.



IHC-P analysis of Human Liver Tissue, with DAB staining.



IHC-P analysis of Human Rectum Tissue, with DAB staining.

Polyclonal Antibody to Matrix Metalloproteinase 12 (MMP12).

Abbexa Ltd, Innovation Centre, Cambridge Science Park, Cambridge, CB4 0EY, UK
Telephone: +44 (0) 1223 755950 - Fax: +44 (0) 1223 755951 - E-Mail: info@abbexa.com

Target:	Matrix Metalloproteinase 12 (MMP12)
Reactivity:	Human
Host:	Rabbit
Clonality:	Polyclonal
Tested Applications:	WB, IHC, IF/ICC, IP
Recommended dilutions:	Optimal dilutions/concentrations should be determined by the end user.
Immunogen:	MMP12 (Ala290-Gly469)
Purification:	Antigen-specific affinity chromatography followed by Protein A affinity chromatography.
Form:	Liquid
Conjugation:	Unconjugated
Storage:	Store at 4 °C for frequent use. Aliquot and store at -20 °C for one year. Avoid repeated freeze/thaw cycles.
Swiss Prot:	P39900
Enzyme Commission Number:	EC 3.4.24.65::EC 3.4.24
Buffer:	0.01 M PBS, pH 7.4, containing 0.05% Proclin-300, 50% glycerol.
Note:	This product is for research use only.