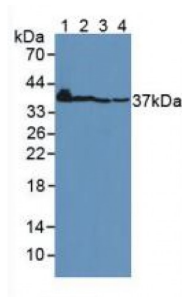


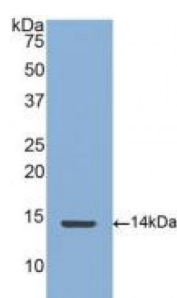
Abbexa Ltd, Innovation Centre, Cambridge Science Park, Cambridge, CB4 0EY, UK
Telephone: +44 (0) 1223 755950 - Fax: +44 (0) 1223 755951 - E-Mail: info@abbexa.com

Connective Tissue Growth Factor (CTGF) Antibody

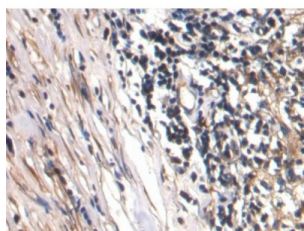
Catalogue No.: abx103225



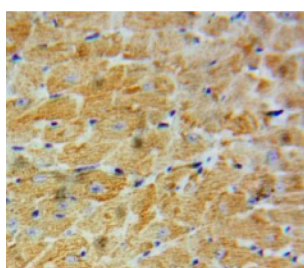
Western blot analysis of (1) Mouse Heart Tissue, (2) Rat Heart Tissue, (3) Mouse Brain Tissue and (4) Rat Brain Tissue.



Western blot analysis of recombinant Human CTGF.



IHC-P analysis of Human Lymph node Tissue, with DAB staining.



IHC-P analysis of Heart tissue, with DAB staining.

Polyclonal Antibody to Connective Tissue Growth Factor (CTGF).

Target: Connective Tissue Growth Factor (CTGF)

Reactivity: Human

Host: Rabbit

Abbexa Ltd, Innovation Centre, Cambridge Science Park, Cambridge, CB4 0EY, UK
Telephone: +44 (0) 1223 755950 - Fax: +44 (0) 1223 755951 - E-Mail: info@abbexa.com

Clonality: Polyclonal

Tested Applications: WB, IHC, IF/ICC, IP

Recommended dilutions: Optimal dilutions/concentrations should be determined by the end user.

Immunogen: CTGF (Glu248-Ala349)

Purification: Antigen-specific affinity chromatography followed by Protein A affinity chromatography.

Form: Liquid

Conjugation: Unconjugated

Storage: Store at 4 °C for frequent use. Aliquot and store at -20 °C for one year. Avoid repeated freeze/thaw cycles.

Swiss Prot: [P29279](#)

Buffer: 0.01 M PBS, pH 7.4, containing 0.05% Proclin-300, 50% glycerol.

Note: This product is for research use only.