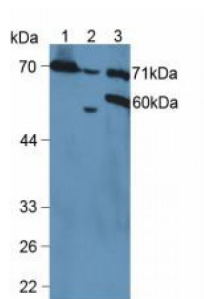


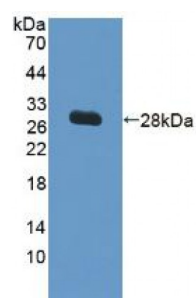
Abbexa Ltd, Innovation Centre, Cambridge Science Park, Cambridge, CB4 0EY, UK
Telephone: +44 (0) 1223 755950 - Fax: +44 (0) 1223 755951 - E-Mail: info@abbexa.com

Vascular Cell Adhesion Molecule 1 (VCAM1) Antibody

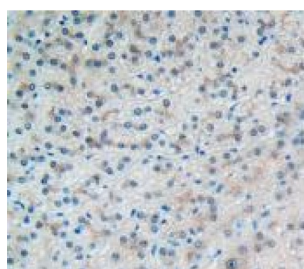
Catalogue No.: abx103675



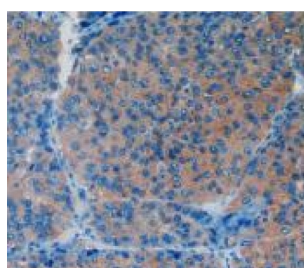
Western blot analysis of (1) Mouse Kidney Tissue, (2) Mouse Placenta Tissue and (3) Human HeLa cells.



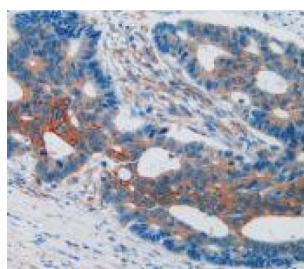
Western blot analysis of recombinant Human VCAM1.



IHC-P analysis of Human Liver Tissue, with DAB staining.

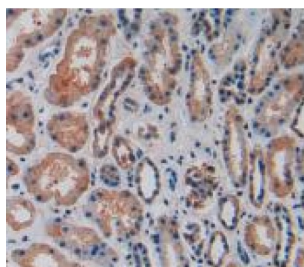


IHC-P analysis of Human Liver Cancer Tissue, with DAB staining.



IHC-P analysis of Human Rectum Cancer Tissue, with DAB staining.

Abbexa Ltd, Innovation Centre, Cambridge Science Park, Cambridge, CB4 0EY, UK
Telephone: +44 (0) 1223 755950 - Fax: +44 (0) 1223 755951 - E-Mail: info@abbexa.com



IHC-P analysis of Human Kidney Tissue, with DAB staining.

Polyclonal Antibody to Vascular Cell Adhesion Molecule 1 (VCAM1).

Target: Vascular Cell Adhesion Molecule 1 (VCAM1)

Reactivity: Human

Host: Rabbit

Clonality: Polyclonal

Tested Applications: WB, IHC, IF/ICC, IP

Recommended dilutions: Optimal dilutions/concentrations should be determined by the end user.

Immunogen: VCAM1 (Gln109-Ser318 (23))

Purification: Antigen-specific affinity chromatography followed by Protein A affinity chromatography.

Form: Liquid

Conjugation: Unconjugated

Storage: Store at 4 °C for frequent use. Aliquot and store at -20 °C for one year. Avoid repeated freeze/thaw cycles.

Swiss Prot: [P19320](#)

Buffer: PBS, pH 7.4, containing 0.02% NaN₃, 50% glycerol.

Note: This product is for research use only.