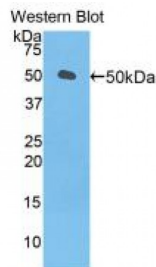


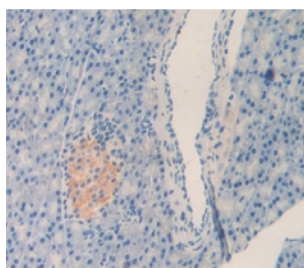
Abbexa Ltd, Innovation Centre, Cambridge Science Park, Cambridge, CB4 0EY, UK
Telephone: +44 (0) 1223 755950 - Fax: +44 (0) 1223 755951 - E-Mail: info@abbexa.com

Left/Right Determination Factor 1 (LEFTY1) Antibody

Catalogue No.: abx103719



Western blot analysis of recombinant Mouse LEFTY1.



IHC-P analysis of Mouse Tissue, with DAB staining.

Polyclonal Antibody to Left/Right Determination Factor 1 (LEFTY1).

Target: Left/Right Determination Factor 1 (LEFTY1)

Reactivity: Mouse

Host: Rabbit

Clonality: Polyclonal

Tested Applications: WB, IHC, IF/ICC, IP

Recommended dilutions: WB: 0.5 - 2 µg/ml, ICC: 5 - 20 µg/ml, IHC-F: 5 - 20 µg/ml, IHC-P: 5 - 20 µg/ml, ELISA: 0.05 - 2 µg/ml. Optimal dilutions/concentrations should be determined by the end user.

Immunogen: LEFTY1 (Ser169-Pro368)

Purification: Antigen-specific affinity chromatography followed by Protein A affinity chromatography.

Form: Liquid

Isotype: IgG

Conjugation: Unconjugated

Abbexa Ltd, Innovation Centre, Cambridge Science Park, Cambridge, CB4 0EY, UK
Telephone: +44 (0) 1223 755950 - Fax: +44 (0) 1223 755951 - E-Mail: info@abbexa.com

Specificity:	The antibody is a rabbit polyclonal antibody raised against LEFTY1. It has been selected for its ability to recognize LEFTY1 in immunohistochemical staining and western blotting.
Storage:	Store at 4 °C for frequent use. Aliquot and store at -20 °C for one year. Avoid repeated freeze/thaw cycles.
Swiss Prot:	<u>Q64280</u>
Buffer:	PBS, pH 7.4, containing 0.02% NaN ₃ , 50% glycerol.
Note:	This product is for research use only.