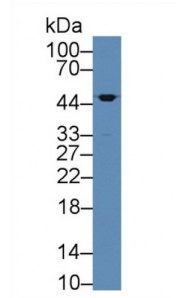
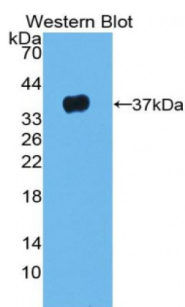


Leucine Rich Alpha-2-Glycoprotein 1 (LRG1) Antibody

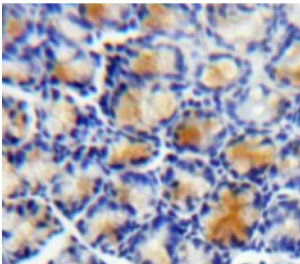
Catalogue No.: abx103724



Western blot analysis of Human Urine, using Human LRG1 Antibody (2 µg/ml) and HRP-conjugated Goat Anti-Rabbit antibody ([abx400043](#), 0.2 µg/ml).



Western blot analysis of the recombinant protein.



IHC-P analysis of Bowels tissue, with DAB staining.

Polyclonal Antibody to Leucine Rich Alpha-2-Glycoprotein 1 (LRG1).

Target: Leucine Rich Alpha-2-Glycoprotein 1 (LRG1)

Reactivity: Human

Host: Rabbit

Clonality: Polyclonal

Tested Applications: WB, IHC, IF/ICC, IP

Recommended dilutions: WB: 1/50 - 400, ICC: 1/50 - 500, IHC-F: 1/50 - 500, IHC-P: 1/10 - 100, ELISA: 1/100 - 200. Optimal dilutions/concentrations should be determined by the end user.

Immunogen: LRG1 (Thr37-Leu340)

Abbexa Ltd, Innovation Centre, Cambridge Science Park, Cambridge, CB4 0EY, UK
Telephone: +44 (0) 1223 755950 - Fax: +44 (0) 1223 755951 - E-Mail: info@abbexa.com

| | |
|----------------------|--|
| Purification: | Antigen-specific affinity chromatography followed by Protein A affinity chromatography. |
| Form: | Liquid |
| Isotype: | IgG |
| Conjugation: | Unconjugated |
| Specificity: | The antibody is a rabbit polyclonal antibody raised against LRG1. It has been selected for its ability to recognize LRG1 in immunohistochemical staining and western blotting. |
| Storage: | Store at 4 °C for frequent use. Aliquot and store at -20 °C for one year. Avoid repeated freeze/thaw cycles. |
| Swiss Prot: | P02750 |
| Buffer: | PBS, pH 7.4, containing 0.02% NaN ₃ , 50% glycerol. |
| Note: | This product is for research use only. |