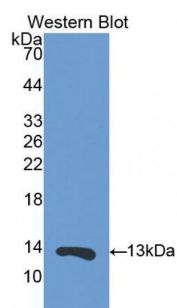


Abbexa Ltd, Innovation Centre, Cambridge Science Park, Cambridge, CB4 0EY, UK
Telephone: +44 (0) 1223 755950 - Fax: +44 (0) 1223 755951 - E-Mail: info@abbexa.com

S100 Calcium Binding Protein A11 (S100A11) Antibody

Catalogue No.: abx103774



Western blot analysis of the recombinant protein.

Polyclonal Antibody to S100A11.

Target:	S100A11
Reactivity:	Rabbit
Host:	Guinea pig
Clonality:	Polyclonal
Tested Applications:	ELISA, WB, IHC, IF/ICC
Recommended dilutions:	Optimal dilutions/concentrations should be determined by the end user.
Immunogen:	S100A11 (Met1-Phe102).
Conjugation:	Unconjugated
Storage:	Aliquot and store at -20 °C. Avoid repeated freeze/thaw cycles.
Note:	This product is for research use only.